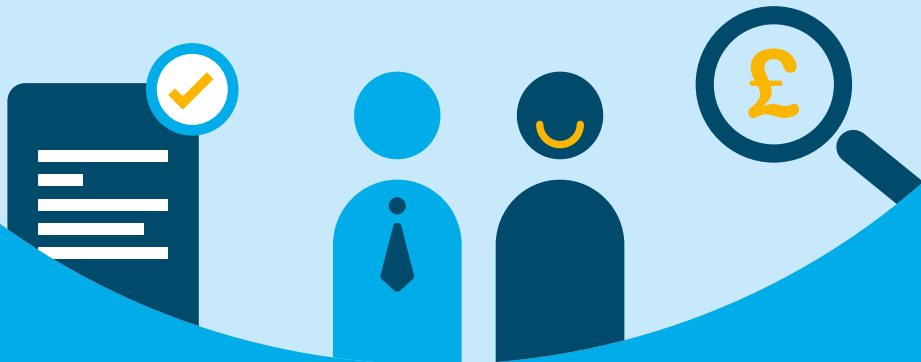


Yorkshire Water Indicative Wholesale Charges 2019-2020



Contents

Board Assurance Statement	03
Non-household stakeholder contact information	05
About this document	06
Indicative non-household Wholesale Charges 2019-2020	
Water Charges – Yorkshire Water	07
Water Charges – York Waterworks	08
Sewerage Charges	09
Trade Effluent Charges	10
Indicative non-household Wholesale Charges 2019-2020 - OFWAT PR14 Template	11
Indicative household Wholesale Charges 2019-2020	
Water – Yorkshire Water	17
Water – York Waterworks	18
Sewerage	19

Yorkshire Water

Indicative Wholesale Charges publication 2019-2020

Board Assurance Statement

As a Director of Yorkshire Water at the time of the publication of the company's indicative Wholesale Charges, I the undersigned, confirm that:

- a) so far as I am aware, there is no relevant audit information of which the auditors of the company's indicative Wholesale Charges are unaware; and
- b) I have taken all the steps that I ought to have taken as a director in order to make myself aware of any relevant audit information and to establish that the auditors of the company's indicative Wholesale Charges are aware of the information.

Consistent with the companies (Audit, Investigations and Community Enterprise) Act 2004.

And that, to the best of my knowledge, having made all due inquiries and based on sources of evidence, that:

- c) the company complies with its legal obligations relating to the indicative Wholesale Charges it has published;
- d) the Board has assessed the effects of the new charges on water supply and sewerage licensees (as a whole or in groups) who are retailing wholesale services and on the customers occupying Eligible Premises (as whole or in groups) and approves the impact assessments and handling strategies developed in instances where bill increases for licensees (as a whole or in groups) who are retailing wholesale services to eligible customers and on customers occupying Eligible Premises (as a whole or in groups) exceed 5%;
- e) the company has appropriate systems and processes in place (including up-to-date models and data) to make sure that the information published about its indicative Wholesale Charges is accurate; and
- f) the company has consulted with relevant stakeholders in a timely and effective manner on its indicative Wholesale Charges.



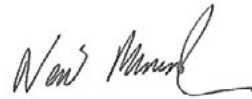
Anthony Rabin
Chairman



Richard Flint
Chief Executive



Liz Barber
Director



Nevil Muncaster
Director



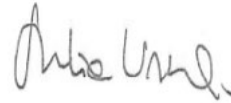
Pamela Doherty
Director



Ray O'Toole
Director



Teresa Robson-Capps
Director



Julia Unwin
Director



Andrew Wylie
Director



Andrew Dench
Director



Michael Osborne
Director



Scott Auty
Director



Kathy Smith
Company Secretary

Non-Household Stakeholder Contact Information

Existing and potential Water Supply and Sewerage Licensee (WSSL):

Wholesale Service Desk:

Please call on 0344 9020228

Email: wholesaleservicedesk@yorkshirewater.com

Non-Household customers:

Please contact your retailer directly.

Yorkshire Water Main Offices:

Head Office and Registered Office:

Western House, Western Way,
Halifax Road, Bradford, BD6 2SZ

Tel: (01274) 691111



Indicative Wholesale Charges 2019-2020

About this document

This document sets out a summary of the indicative primary Wholesale Charges for 2019-2020 of Yorkshire Water Services Limited (Yorkshire Water), made in line with the Wholesale Charging Rules issued by Ofwat under sections 66E and 117I of the Water Industry Act 1991.

These are the charges we expect to set for 2019-20 based on the information available at this time subject to the list of potential variations as set out below;

- updates to information in respect of underlying charging base movements and
- Wholesale Charges are limited by inflation-linked revenue controls set by Ofwat. Final Charges will depend on the rate of inflation as per the Retail Price Index for November, which will be published on 19th December 2018.

The Wholesale Charges scheme is to be used in conjunction with the codes:

mosl.co.uk/open-water/codes

Please refer to the 'Wholesale Charges 2018-19' for interpretations, terms and conditions.

yorkshirewater.com/business/wholesale-charges

This document contains our signed Board Assurance Statement. The Board Assurance Statement was signed following our assurance of the process in calculating the Charges.

All Charges contained within this document are subject to the addition of any VAT chargeable per the Wholesale Retail Code.

Final Wholesale Charges 2019-2020 will be published in January 2019.

Indicative non-household wholesale charges 2019-2020 – Yorkshire Water (excluding York Waterworks)

DESCRIPTION	UNITS	2019-20 WHOLESALE NON-HOUSEHOLD CHARGES	CMOS TARIFF CODE	CMOS TARIFF NAME	CMOS TARIFF REPORT NAME
Unmeasured non-household					
Rateable Value Charge	p/ERV	148.81	UWVYWS	Unmeasured Water	UWRVPoundage
Fixed charge (low consumption)	£	40.29	UWVYWS	Unmeasured Water	UWFixedCharge
Assessed non-household					
Fixed charge (low consumption)	£	40.29	AW1YWS	Assessed Water	AWBandCharge - Band 1
Assessed - Small (145m ³)	£ per annum	194.72	AW1YWS	Assessed Water	AWBandCharge - Band 2
Assessed - Medium (255m ³)	£ per annum	342.44	AW1YWS	Assessed Water	AWBandCharge - Band 3
Assessed - Large (550m ³)	£ per annum	738.60	AW1YWS	Assessed Water	AWBandCharge - Band 4
Assessed - Extra large (1000m ³)	£ per annum	1,342.90	AW1YWS	Assessed Water	AWBandCharge - Band 5
Measured non-household					
Volumetric charge less than 50 thousand cubic meters					
Standard tariff 0-5 thousand cubic meters per annum	p/m ³	134.29	MW1YWS	Measured Water	Metered Volumetric Charges
Standard tariff 5-50 thousand cubic meters per annum	p/m ³	134.29	MW1YWS	Measured Water	Metered Volumetric Charges
Volumetric charge more than 50 thousand cubic meters					
Banded tariff: <50 thousand cubic meters per annum	p/m ³	134.29	FS1YWS	Measured Water Falling Block 1	Metered Volumetric Charges
Banded tariff: >50 to 250 cubic meters per annum	p/m ³	85.07	FS2YWS	Measured Water Falling Block 2	Metered Volumetric Charges
Banded tariff: >250 cubic meters per annum	p/m ³	72.33	FS3YWS	Measured Water Falling Block 3	Metered Volumetric Charges

Indicative non-household wholesale charges 2019-2020 – York Waterworks

DESCRIPTION	UNITS	2019-20 WHOLESALE NON-HOUSEHOLD CHARGES	CMOS TARIFF CODE	CMOS TARIFF NAME	CMOS TARIFF REPORT NAME
Unmeasured non-household					
Rateable Value Charge	p/£RV	86.00	UWVYOR	Unmeasured Water	UWRVPoundage
Fixed charge (low consumption)	£	22.31	UWFYOR	Unmeasured Water	UWFixedCharge
Assessed non-household					
Fixed charge (low consumption)	£	22.31	AWF1YOR	Assessed Water	AWBandCharge - Band 1
Assessed - Small (145m ³)	£ per annum	107.84	AW1YOR	Assessed Water	AWBandCharge - Band 2
Assessed - Medium (255m ³)	£ per annum	189.64	AW1YOR	Assessed Water	AWBandCharge - Band 3
Assessed - Large (550m ³)	£ per annum	409.04	AW1YOR	Assessed Water	AWBandCharge - Band 4
Assessed - Extra large (1000m ³)	£ per annum	743.70	AW1YOR	Assessed Water	AWBandCharge - Band 5
Measured non-household					
Volumetric charge less than 50 thousand cubic meters					
Standard tariff 0-5 thousand cubic meters per annum	p/m ³	74.37	MW1YOR	Measured Water	Metered Volumetric Charges
Standard tariff 5-50 thousand cubic meters per annum	p/m ³	74.37	MW1YOR	Measured Water	Metered Volumetric Charges
Volumetric charge more than 50 thousand cubic meters					
Banded tariff: <50 thousand cubic meters per annum	p/m ³	74.37	FW1YOR	Measured Water (York) Falling Block 1	Metered Volumetric Charges
Banded tariff: >50 to 250 cubic meters per annum	p/m ³	65.32	FW2YOR	Measured Water (York) Falling Block 2	Metered Volumetric Charges
Banded tariff: >250 cubic meters per annum	p/m ³	65.32	FW3YOR	Measured Water (York) Falling Block 3	Metered Volumetric Charges

Indicative non-household wholesale charges 2019-2020 – Sewerage Charges

DESCRIPTION	UNITS	2019-20 WHOLESALE NON-HOUSEHOLD CHARGES	CMOS TARIFF CODE	CMOS TARIFF NAME	CMOS TARIFF REPORT NAME
Unmeasured non-household					
Rateable Value Charge	p/£RV	178.12	USVYWS	Unmeasured Sewerage	USRV Poundage
Fixed charge (low consumption)	£	46.93	USFYWS	Unmeasured Sewerage	USFixed Charge
Assessed non-household					
Fixed charge (low consumption)	£	46.93	AS1YWS	Assessed Sewerage	ASBandCharge - Band 1
Assessed - Small (145m ³)	£ per annum	226.85	AS1YWS	Assessed Sewerage	ASBandCharge - Band 2
Assessed - Medium (255m ³)	£ per annum	398.94	AS1YWS	Assessed Sewerage	ASBandCharge - Band 3
Assessed - Large (550m ³)	£ per annum	860.45	AS1YWS	Assessed Sewerage	ASBandCharge - Band 4
Assessed - Extra large (1000m ³)	£ per annum	1,564.46	AS1YWS	Assessed Sewerage	ASBandCharge - Band 5
Measured non-household					
Volumetric charge less than 50 thousand cubic meters					
Standard tariff 0-5 thousand cubic meters per annum	p/m ³	164.68	MS1YWS	Measured Sewerage	Metered Volumetric Charges
Standard tariff 5-50 thousand cubic meters per annum	p/m ³	164.68	MS1YWS	Measured Sewerage	Metered Volumetric Charges
Volumetric charge more than 50 thousand cubic meters					
Banded tariff: <50 thousand cubic meters per annum	p/m ³	164.68	FS1YWS	Measured Sewerage Falling Block 1	Metered Volumetric Charges
Banded tariff: >50 to 250 cubic meters per annum	p/m ³	132.82	FS2YWS	Measured Sewerage Falling Block 2	Metered Volumetric Charges
Banded tariff: >250 cubic meters per annum	p/m ³	121.21	FS3YWS	Measured Sewerage Falling Block 3	Metered Volumetric Charges
Surface water charges					
Band - A - Up to 500 m ²	£	44.99	SS1YWS	Surface Water Drainage	SWBandCharge - Band 1
Band - B - Up to 750 m ²	£	105.28	SS1YWS	Surface Water Drainage	SWBandCharge - Band 2
Band - C - Up to 1,000 m ²	£	157.92	SS1YWS	Surface Water Drainage	SWBandCharge - Band 3
Band - D - Up to 2,000 m ²	£	210.56	SS1YWS	Surface Water Drainage	SWBandCharge - Band 4
Band - E - Up to 15,000 m ²	£	421.12	SS1YWS	Surface Water Drainage	SWBandCharge - Band 5
Band - F - Up to 35,000 m ²	£	3,158.40	SS1YWS	Surface Water Drainage	SWBandCharge - Band 6
Band - G - Up to 150,000 m ²	£	7,369.60	SS1YWS	Surface Water Drainage	SWBandCharge - Band 7
Band - H - Over 150,000 m ²	£	31,584.01	SS1YWS	Surface Water Drainage	SWBandCharge - Band 8

Indicative non-household wholesale charges 2019-2020 – Trade effluent charges

DESCRIPTION	UNITS	2019-20 WHOLESALE NON-HOUSEHOLD CHARGES	CMOS TARIFF CODE	CMOS TARIFF NAME	CMOS TARIFF REPORT NAME
Reception and conveyance standard tariff					
Standard tariff <5 cubic meters per annum	p/m ³	48.35	TE1YWS / TF1YWS / TF2YWS / TF3YWS	Trade Effluent	Labelled as RoBT
Standard tariff 5>50 cubic meters per annum	p/m ³	48.35	TE1YWS / TF1YWS / TF2YWS / TF3YWS	Trade Effluent	Labelled as RoBT
Banded tariffs					
<50 cubic meters per annum	p/m ³	48.35	TF1YWS	Trade Effluent Falling Block 1	Labelled as RoBT
>50 to 250 cubic meters per annum	p/m ³	27.29	TF2YWS	Trade Effluent Falling Block 2	Labelled as RoBT
>250 cubic meters per annum	p/m ³	18.23	TF3YWS	Trade Effluent Falling Block 3	Labelled as RoBT
V - Preliminary treatment charge	p/m ³	47.82	TE1YWS / TF1YWS / TF2YWS / TF3YWS	Trade Effluent	Labelled as Vo
B - Biological treatment	p/m ³	43.36	TE1YWS / TF1YWS / TF2YWS / TF3YWS	Trade Effluent	Labelled as RoBT
S - Sludge disposal charge	p/m ³	28.64	TE1YWS / TF1YWS / TF2YWS / TF3YWS	Trade Effluent	Labelled as So
Minimum charge (Annual)	£ per annum	459.74	TE1YWS / TF1YWS / TF2YWS / TF3YWS	Trade Effluent	TEMinCharge
Os - Biological strength of combined sewage	mg/litre COD	840.00	TE1YWS / TF1YWS / TF2YWS / TF3YWS	Trade Effluent	Labelled as Os
Ss - Sludge strength of combined sewage	mg/litre StS	335.00	TE1YWS / TF1YWS / TF2YWS / TF3YWS	Trade Effluent	Labelled as Ss

Mogden Formula

$$R + V + \frac{(Ot)}{(Os)} B + \frac{(St)}{(Ss)} S$$

Indicative non-household wholesale charges 2019-2020 – OFWAT PR14 template

Schedule for measured wholesale water supply. Standard charges for Yorkshire Water

VOLUMETRIC CHARGES PER M ³ – FALLING BLOCK TARIFF (FORECAST VOLUME SHOWN VERTICALLY)	RATE OF INDIVIDUAL FALLING BLOCKS SHOWN HORIZONTALLY						
	0-20MI	20-50MI	50-100MI	100-150MI	150-250MI	250-3,000MI	Over 3,000MI
<20MI	1.3429	1.3429	0.8507	0.8507	0.8507	0.7233	0.7233
20-50MI	1.3429	1.3429	0.8507	0.8507	0.8507	0.7233	0.7233
50-100MI	1.3429	1.3429	0.8507	0.8507	0.8507	0.7233	0.7233
100-150MI	1.3429	1.3429	0.8507	0.8507	0.8507	0.7233	0.7233
150-180MI	1.3429	1.3429	0.8507	0.8507	0.8507	0.7233	0.7233
180-250MI	1.3429	1.3429	0.8507	0.8507	0.8507	0.7233	0.7233
250-750MI	1.3429	1.3429	0.8507	0.8507	0.8507	0.7233	0.7233
750-3,000MI	1.3429	1.3429	0.8507	0.8507	0.8507	0.7233	0.7233
3,000MI	1.3429	1.3429	0.8507	0.8507	0.8507	0.7233	0.7233

Schedule for measured wholesale water supply. Standard charges for York

VOLUMETRIC CHARGES PER M ³ – FALLING BLOCK TARIFF (FORECAST VOLUME SHOWN VERTICALLY)	RATE OF INDIVIDUAL FALLING BLOCKS SHOWN HORIZONTALLY						
	0-20MI	20-50MI	50-100MI	100-150MI	150-250MI	250-3,000MI	Over 3,000MI
<20MI	0.7437	0.7437	0.6532	0.6532	0.6532	0.6532	0.6532
20-50MI	0.7437	0.7437	0.6532	0.6532	0.6532	0.6532	0.6532
50-100MI	0.7437	0.7437	0.6532	0.6532	0.6532	0.6532	0.6532
100-150MI	0.7437	0.7437	0.6532	0.6532	0.6532	0.6532	0.6532
150-180MI	0.7437	0.7437	0.6532	0.6532	0.6532	0.6532	0.6532
180-250MI	0.7437	0.7437	0.6532	0.6532	0.6532	0.6532	0.6532
250-750MI	0.7437	0.7437	0.6532	0.6532	0.6532	0.6532	0.6532
750-3,000MI	0.7437	0.7437	0.6532	0.6532	0.6532	0.6532	0.6532
3,000MI	0.7437	0.7437	0.6532	0.6532	0.6532	0.6532	0.6532

Schedule for unmeasured wholesale water supply. Standard charges for Yorkshire Water

UNMEASURED WATER	
Standing / fixed charge	£ Per annum
Assessed - Small (145m ³)	194.72
Assessed - Medium (255m ³)	342.44
Assessed - Large (550m ³)	738.60
Assessed - Extra Large (1000m ³)	1,342.90
Assessed - Fixed Charge	40.29
Variable	£ per unit
RV < £1,001	1.4881
RV £1,001 - £5,000	1.4881
RV £5,001 - £50,000	1.4881
RV >£50,000	1.4881
Other	£ Per annum
Single lock-up garage	40.29

Schedule for unmeasured wholesale water supply. Standard charges for York

UNMEASURED WATER	
Standing / fixed charge	£ Per annum
Assessed - Small (145m ³)	107.84
Assessed - Medium (255m ³)	189.64
Assessed - Large (550m ³)	409.04
Assessed - Extra Large (1000m ³)	743.70
Variable	£ per unit
RV < £1,001	0.8600
RV £1,001 - £5,000	0.8600
RV £5,001 - £50,000	0.8600
RV >£50,000	0.8600
Other	£ Per annum
Single lock-up garage	22.31

Schedule for measured wholesale sewerage

AREA-BASED CHARGES (£ P.A.)			
FIXED CHARGE	SURFACE WATER DRAINAGE ONLY	HIGHWAY DRAINAGE ONLY	SURFACE WATER AND HIGHWAY DRAINAGE
0-20 m ²	44.99	N/A	N/A
21-99 m ²	44.99	N/A	N/A
100-124 m ²	44.99	N/A	N/A
125-199 m ²	44.99	N/A	N/A
200-299 m ²	44.99	N/A	N/A
300-349 m ²	44.99	N/A	N/A
350-499 m ²	44.99	N/A	N/A
500-649 m ²	105.28	N/A	N/A
650-749 m ²	105.28	N/A	N/A
750-999 m ²	157.92	N/A	N/A
1,000-1,499 m ²	210.56	N/A	N/A
1,500-1,999 m ²	210.56	N/A	N/A
2,000-2,499 m ²	421.12	N/A	N/A
2,500-2,999 m ²	421.12	N/A	N/A
3,000-4,999 m ²	421.12	N/A	N/A
5,000-6,999 m ²	421.12	N/A	N/A
7,000-7,499 m ²	421.12	N/A	N/A
7,500-9,999 m ²	421.12	N/A	N/A
10,000-11,999 m ²	421.12	N/A	N/A
12,000-14,999 m ²	421.12	N/A	N/A
15,000-17,999 m ²	3,158.40	N/A	N/A
18,000-19,999 m ²	3,158.40	N/A	N/A
20,000-24,999 m ²	3,158.40	N/A	N/A
25,000-29,999 m ²	3,158.40	N/A	N/A
30,000-34,999 m ²	3,158.40	N/A	N/A
35,000-39,999 m ²	7,369.60	N/A	N/A
40,000-44,999 m ²	7,369.60	N/A	N/A
45,000-49,999 m ²	7,369.60	N/A	N/A
50,000-74,999 m ²	7,369.60	N/A	N/A
75,000-99,999 m ²	7,369.60	N/A	N/A
100,000-124,999 m ²	7,369.60	N/A	N/A
125,000-149,999 m ²	7,369.60	N/A	N/A
150,000 m ² and above	31,584.01	N/A	N/A

Schedule for measured wholesale sewerage

VOLUMETRIC CHARGES – FALLING BLOCK (FORECAST VOLUME SHOWN VERTICALLY)	RATE OF INDIVIDUAL RISING BLOCKS SHOWN HORIZONTALLY					
	0-5MI	5- 50MI	50-100MI	100-250MI	>250MI	Separate standing charge
0-5	1.6468	1.6468	1.3282	1.3282	1.2121	N/A
5-50MI	1.6468	1.6468	1.3282	1.3282	1.2121	N/A
50MI	1.6468	1.6468	1.3282	1.3282	1.2121	N/A
100MI	1.6468	1.6468	1.3282	1.3282	1.2121	N/A
150MI	1.6468	1.6468	1.3282	1.3282	1.2121	N/A

Foul, highway and surface water (unmeasured)

UNMEASURED WASTEWATER (£ P.A.)				
FIXED CHARGES	FOUL ONLY	FOUL AND HIGHWAY DRAINAGE	SURFACE WATER DRAINAGE AND HIGHWAY DRAINAGE	FULL (FOUL, SURFACE WATER DRAINAGE, AND HIGHWAY DRAINAGE)
Assessed - Small (145m ³)	N/A	226.85	N/A	N/A
Assessed - Medium (255m ³)	N/A	398.94	N/A	N/A
Assessed - Large (550m ³)	N/A	860.45	N/A	N/A
Assessed - Extra Large (1000m ³)	N/A	1,564.46	N/A	N/A
Assessed - Fixed Charge	N/A	46.93	N/A	N/A

Foul, highway and surface water (unmeasured) continued

UNMEASURED WASTEWATER (£ PER UNIT)				
VARIABLE CHARGES	FOUL ONLY	FOUL AND HIGHWAY DRAINAGE	SURFACE WATER DRAINAGE AND HIGHWAY DRAINAGE	FULL (FOUL, SURFACE WATER DRAINAGE, AND HIGHWAY DRAINAGE)
Per poundage of RV	N/A	1.7812	N/A	N/A
RV min< £50	N/A	1.7812	N/A	N/A
RV 50-1001	N/A	1.7812	N/A	N/A
RV £1,001 - £5,000	N/A	1.7812	N/A	N/A
RV £5,001 - £50,000	N/A	1.7812	N/A	N/A
RV >£50,000	N/A	1.7812	N/A	N/A

UNMEASURED WASTEWATER (£ P.A.)				
OTHER CHARGES	FOUL ONLY	FOUL AND HIGHWAY DRAINAGE	SURFACE WATER DRAINAGE AND HIGHWAY DRAINAGE	FULL (FOUL, SURFACE WATER DRAINAGE, AND HIGHWAY DRAINAGE)
Single lock-up garage	N/A	46.93	N/A	N/A
SWD - Band A - <500m ²	N/A	N/A	44.99	N/A
SWD - Band B - 500-749m ²	N/A	N/A	105.28	N/A
SWD - Band C - 750-999m ²	N/A	N/A	157.92	N/A
SWD - Band D - 1000-1999m ²	N/A	N/A	210.56	N/A
SWD - Band E - 2000-14999m ²	N/A	N/A	421.12	N/A
SWD - Band F - 15000-34999m ²	N/A	N/A	3,158.40	N/A
SWD - Band G - 35000-149999m ²	N/A	N/A	7,369.60	N/A
SWD - Band H - >150000m ²	N/A	N/A	31,584.01	N/A

Trade effluent

STANDARD COMPONENTS	<0.5 MI	0.5-5MI	5-25MI	25-50MI	50-100MI	100-250MI	>250MI	Other large user charge
R = reception and conveyance charge [p/m ³]	0.4835	0.4835	0.4835	0.4835	0.2729	0.2729	0.1823	N/A
V = primary treatment (volumetric) charge [p/m ³]	0.4782	0.4782	0.4782	0.4782	0.4782	0.4782	0.4782	N/A
Bv = additional volume charge if there is biological treatment [p/m ³]	0.4336	0.4336	0.4336	0.4336	0.4336	0.4336	0.4336	N/A
M = treatment and disposal charge where effluent goes to sea outfall [p/m ³]	N/A	N/A	N/A	N/A	N/A	N/A	N/A	N/A
B = biological oxidation of settled sewage charge [p/kg]	0.5162	0.5162	0.5162	0.5162	0.5162	0.5162	0.5162	N/A
S = treatment and disposal of primary sewage sludge charge [p/kg]	0.8551	0.8551	0.8551	0.8551	0.8551	0.8551	0.8551	N/A
(V + Bv) = primary treatment with biological treatment [p/m ³] (if V and Bv are zero above)	N/A	N/A	N/A	N/A	N/A	N/A	N/A	N/A
Os = Chemical oxygen demand (COD) of crude sewage one hour quiescent settlement	840	840	840	840	840	840	840	N/A
Ss = total suspended solids of crude sewage [mg/litre]	335	335	335	335	335	335	335	N/A
Ot = Chemical oxygen demand (COD) of effluent after one hour quiescent settlement at ph 7	Customer specific							
St = total suspended solids of effluent at ph 7 [mg/litre]	Customer specific							

Where charge per m³ of effluent = R + [(V + Bv) or M] + B(Ot/Os) + S(St/Ss)

Alternative structure:

FIXED CHARGES (£ P.A.)	<0.5 MI	0.5-5MI	5-25MI	25-50MI	50-100MI	100-250MI	>250MI	Other large user charge
Minimum charge	459.74	459.74	459.74	459.74	459.74	459.74	459.74	N/A

Indicative household wholesale charges 2019-2020 – Yorkshire Water

HOUSEHOLD WATER SUPPLY CHARGES YORKSHIRE WATER (EXCLUDING YORK WATERWORKS)

DESCRIPTION	UNITS	2019-20 WHOLESAL HOUSEHOLD CHARGES
Unmeasured household		
Standing charge	£	33.82
Rateable value charge	p/ERV	150.58
Minimum charge	£	85.02
Measured household		
Standing charge	£	9.76
Volumetric charge	p/m ³	137.50

WATER HOUSEHOLD ASSESSED CHARGES (EXCLUDING YORK WATERWORKS)

Property Size

Single person household	£/annum	81.26
Other household premises	£/annum	128.01
Semi- detached house	£/annum	147.26
Detached house	£/annum	178.89

Indicative household wholesale charges 2019-2020 – York Waterworks

HOUSEHOLD WATER SUPPLY CHARGES YORK WATERWORKS		
DESCRIPTION	UNITS	2019-20 WHOLESAL HOUSEHOLD CHARGES
Unmeasured household		
Standing charge	£	25.94
Rateable value charge	p/£RV	86.00
Measured household		
Standing charge	£	9.76
Volumetric charge	p/m ³	77.89
WATER HOUSEHOLD ASSESSED CHARGES YORK WATERWORKS		
Property Size		
Single person household	£/annum	60.39
Other household premises	£/annum	82.97
Semi- detached house	£/annum	96.99
Detached house	£/annum	117.24

Indicative household wholesale charges 2019-2020 – Sewerage

HOUSEHOLD SEWERAGE SUPPLY CHARGES		
DESCRIPTION	UNITS	2019-20 WHOLESAL HOUSEHOLD CHARGES
Unmeasured household		
Standing charge surface water	£	41.35
Rateable value charge	p/£RV	178.12
Rateable value charge – septic tanks	p/£RV	97.97
Measured household		
Standing charge – surface water	£	36.45
Volumetric charge	p/m ³	172.88
SEWERAGE HOUSEHOLD ASSESSED CHARGES		
Property Size		
Single person household	£/annum	121.85
Other household premises	£/annum	177.69
Semi- detached house	£/annum	200.69
Detached house	£/annum	238.46

yorkshirewater.com

Yorkshire Water Services Limited, Western House, Halifax Road,
Bradford, BD6 2SZ. Registered in England and Wales No.2366682

