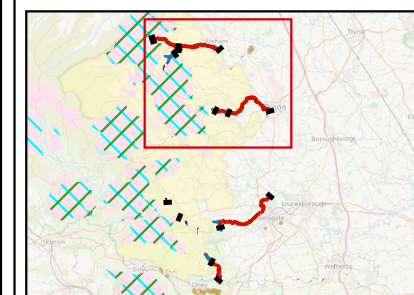


Legend

- River Reaches
- Reach Divides
- Reservoirs
- ▶ Flow direction
- Fish Site
- Macroinvertebrate Site
- National Landscapes
- Local Nature Reserves
- ||| Local Wildlife Sites *
- ▨ Special Areas of Conservation
- ▨ Special Protection Areas
- Sites of Special Scientific Interest



Project title:
Yorkshire Water Drought Plan
Environmental Assessment

Figure title:
North Ecology

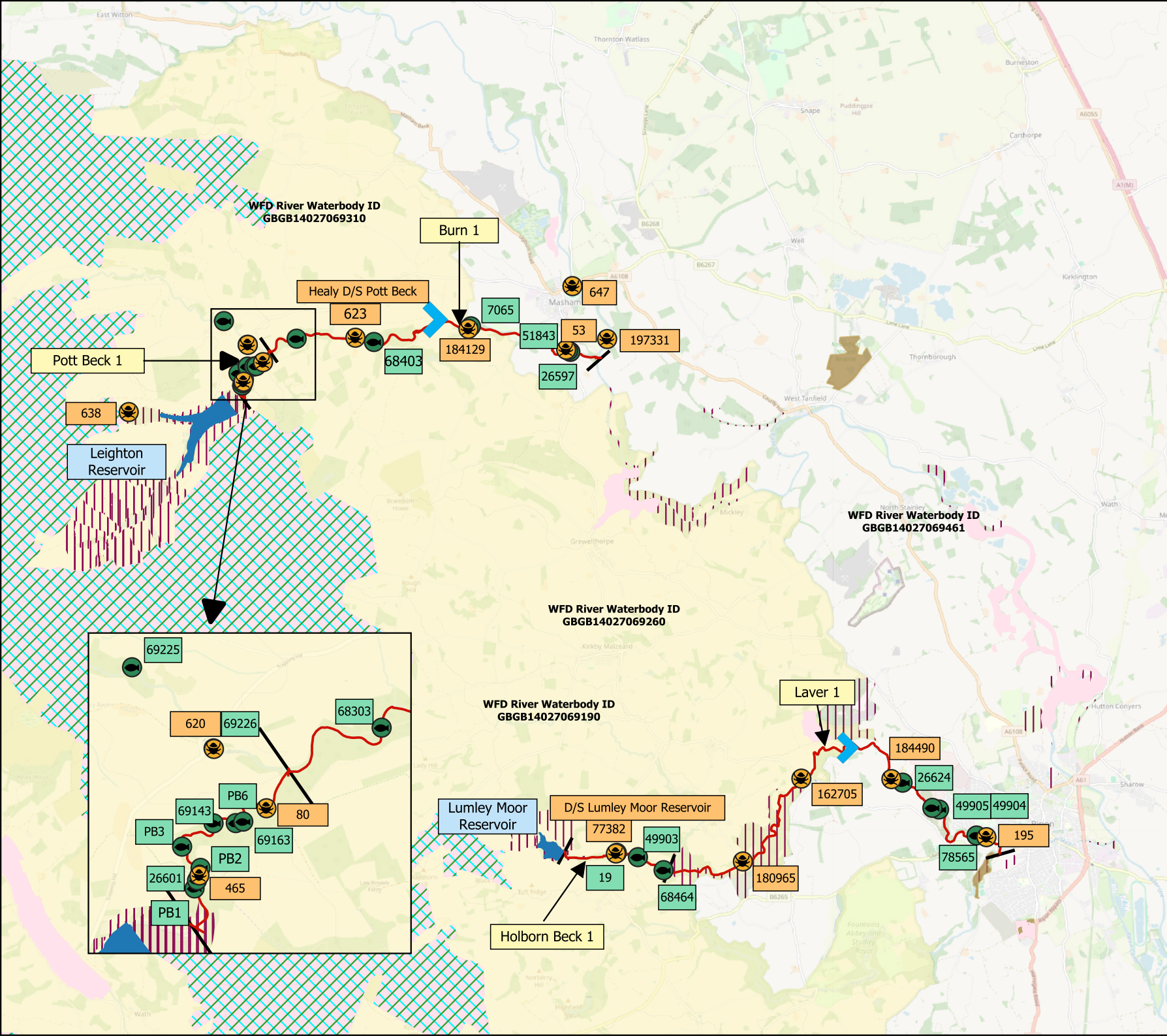
Figure B1.1 **Date:** Dec 2024

NGR: SE 23669 75080 **Scale:** 1:90,000

*Only sites with water dependant receptors are mapped.

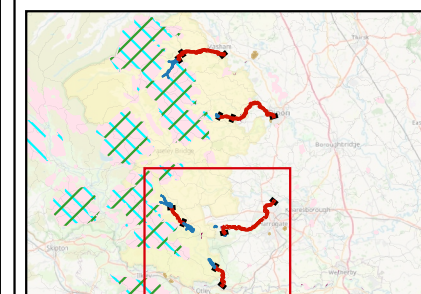
Note: All locations are approximate

© OpenStreetMap contributors OpenStreetMap® is open data, licensed under the Open Data Commons Open Database License (ODbL) by the OpenStreetMap Foundation (OSMF).



Legend

- River Reaches
- Reach Divides
- Reservoirs
- ▶ Flow direction
- Fish Site
- Macroinvertebrate Site
- National Landscapes
- Local Nature Reserves
- ||| Local Wildlife Sites *
- ▨ Special Areas of Conservation
- ▨ Special Protection Areas
- Sites of Special Scientific Interest



Project title:
Yorkshire Water Drought Plan
Environmental Assessment

Figure title:
North Ecology

Figure B1.2 **Date:** Dec 2024

NGR: SE 21719 52822 **Scale:** 1:75,000

*Only sites with water dependant receptors are mapped.

Note: All locations are approximate

© OpenStreetMap contributors OpenStreetMap® is open data, licensed under the Open Data Commons Open Database License (ODbL) by the OpenStreetMap Foundation (OSMF).

