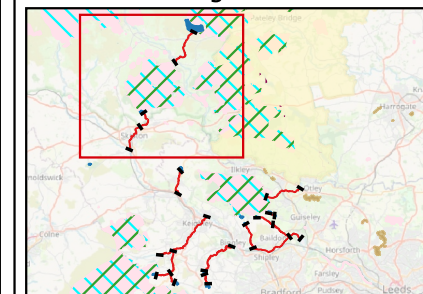


- Legend**
- River Reaches
 - Reach Divides
 - Reservoirs
 - Flow Direction
 - 🐛 Macroinvertebrate Site
 - 🐟 Fish Site
 - Areas of Outstanding Natural Beauty
 - |||| Local Wildlife Sites *
 - ▨ Special Areas of Conservation
 - ▨ Special Protection Areas
 - Sites of Special Scientific Interest
 - - - WFD Management Catchment



Project title:
Yorkshire Water Drought Plan
Environmental Assessment

Figure title:
North West Ecology

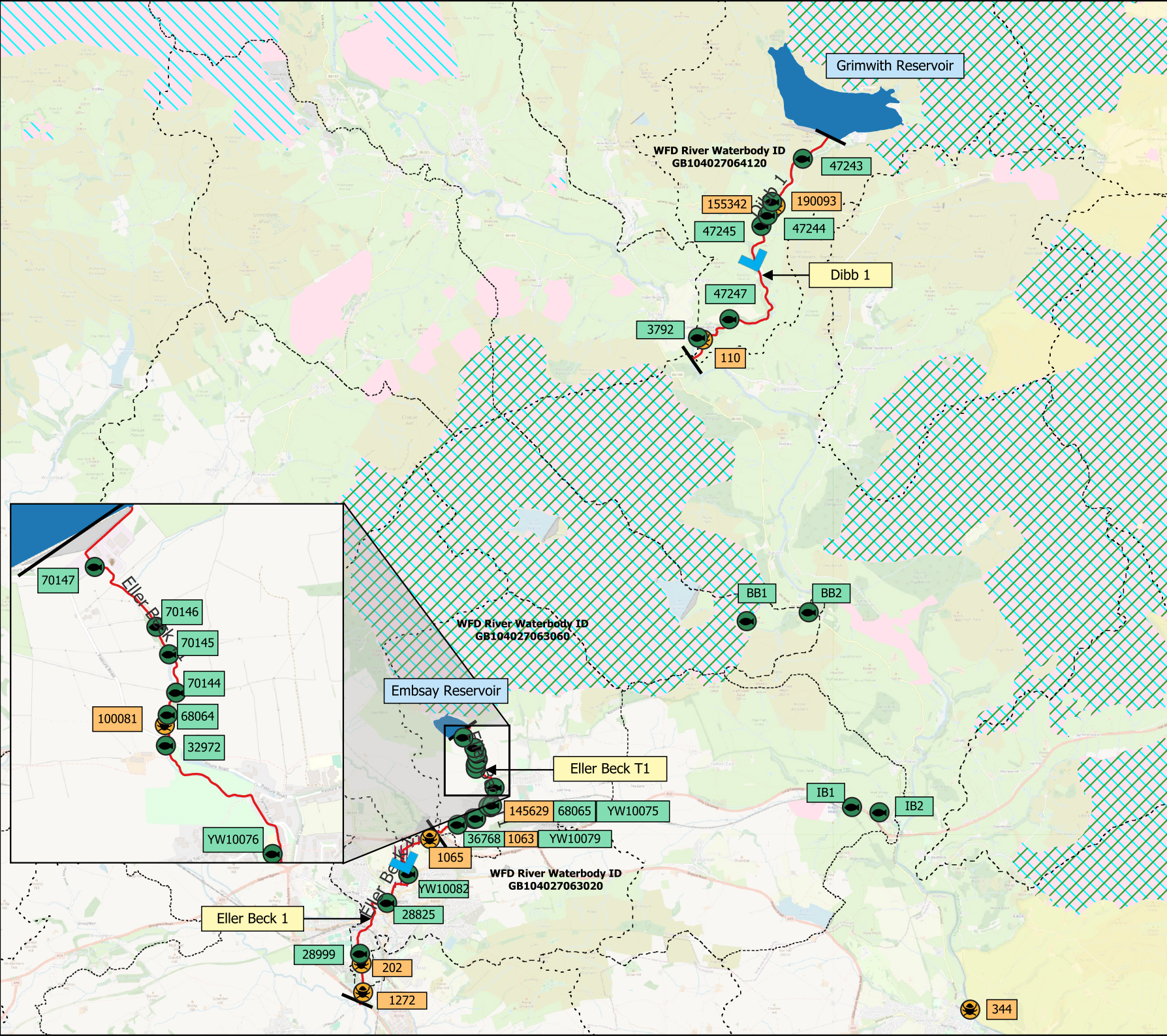
Figure B1.1 **Date:** Dec 2024

NGR: SE 01525 57666 **Scale:** 1:80,000

*Only sites with water dependant receptors are mapped.

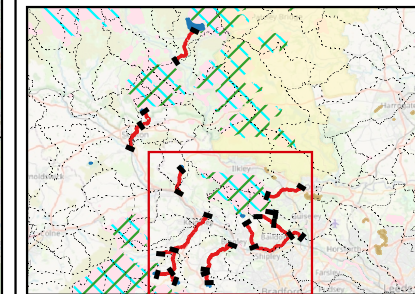
Note: All locations are approximate

© OpenStreetMap contributors OpenStreetMap® is open data, licensed under the Open Data Commons Open Database License (ODbL) by the OpenStreetMap Foundation (OSMF).



Legend

- River Reaches
- Reach Divides
- Reservoirs
- Flow Direction
-  Macroinvertebrate Site
-  Fish Site
- Areas of Outstanding Natural Beauty
- Local Nature Reserves
- Local Wildlife Sites *
- ▨ Special Areas of Conservation
- ▨ Special Protection Areas
- Sites of Special Scientific Interest
- WFD Management Catchment



Project title:

Yorkshire Water Drought Plan
Environmental Assessment

Figure title:

North West Ecology

Figure B1.2

Date: Dec 2024

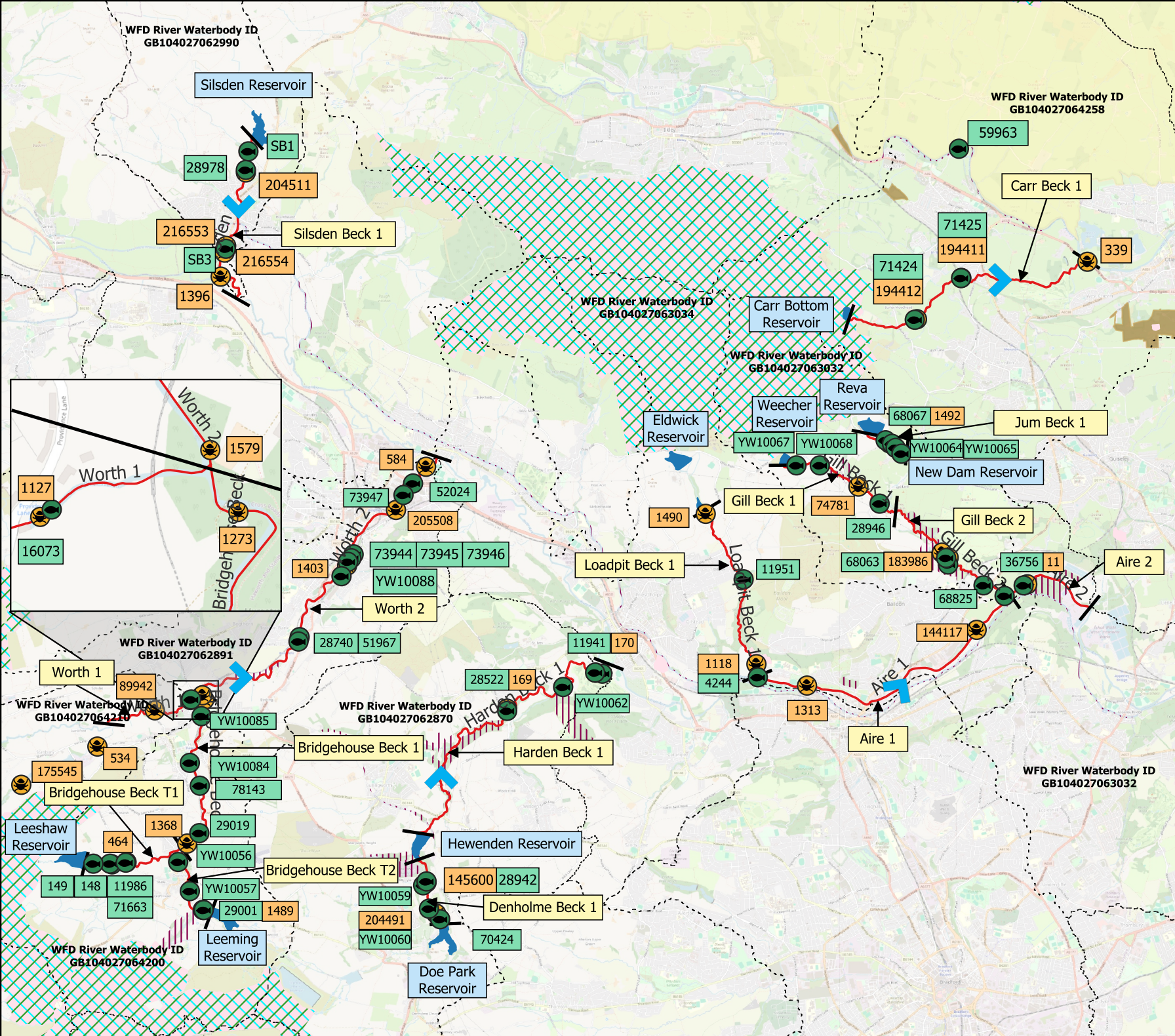
NGR: SE 10122 41302

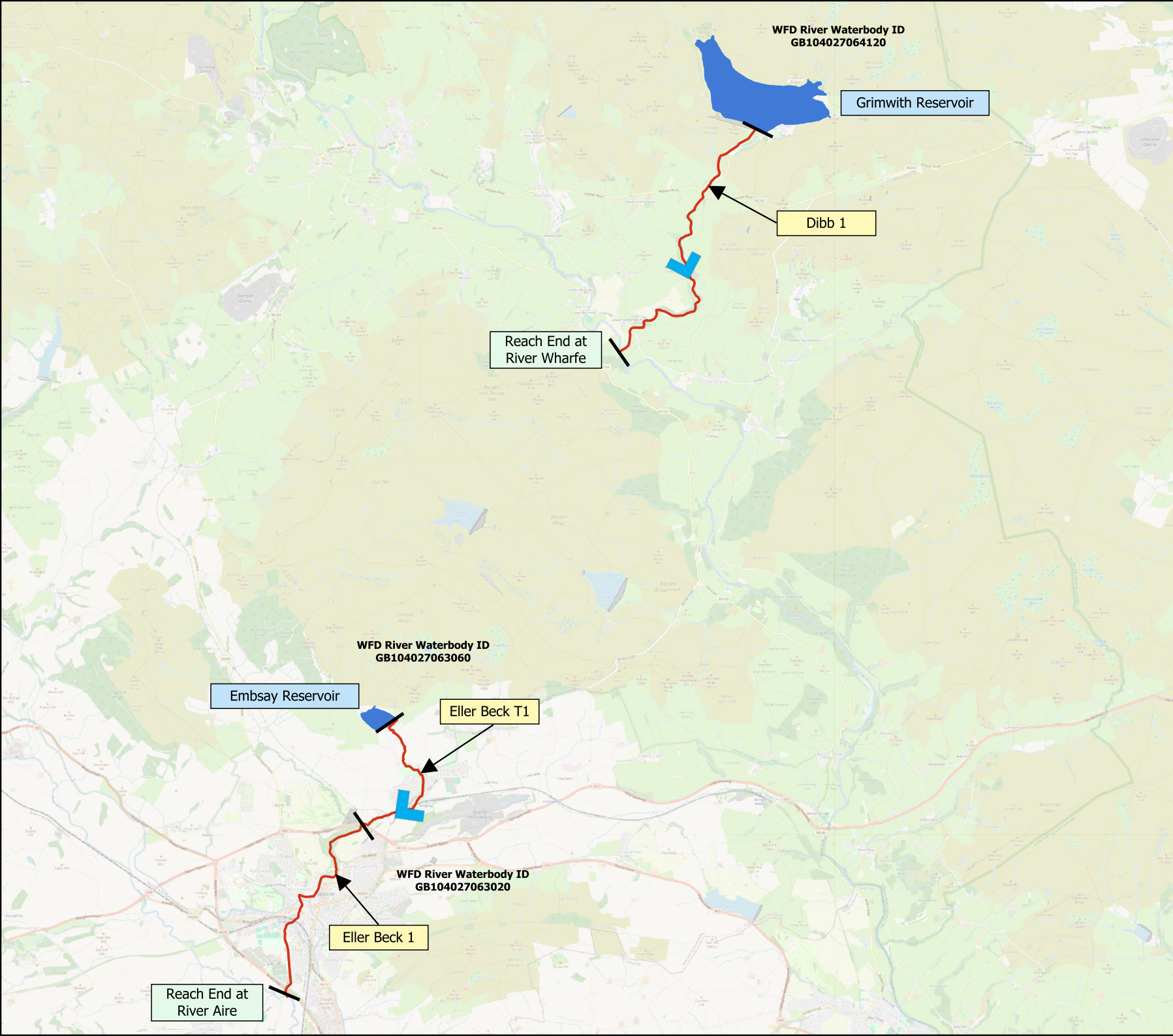
Scale: 1:85,000

*Only sites with water dependant receptors are mapped.

Note: All locations are approximate

© OpenStreetMap contributors OpenStreetMap® is open data, licensed under the Open Data Commons Open Database License (ODbL) by the OpenStreetMap Foundation (OSMF).



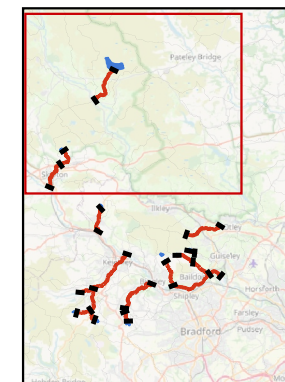


Legend

- Reach Divides
- River Reaches
- Reservoir
- WFD Management Catchment
- Flow Direction



Location of figure within North West Option area:



Project title:

Yorkshire Water Drought Plan
Environmental Assessment

Figure title:

North West Overview Map

Figure 4.1

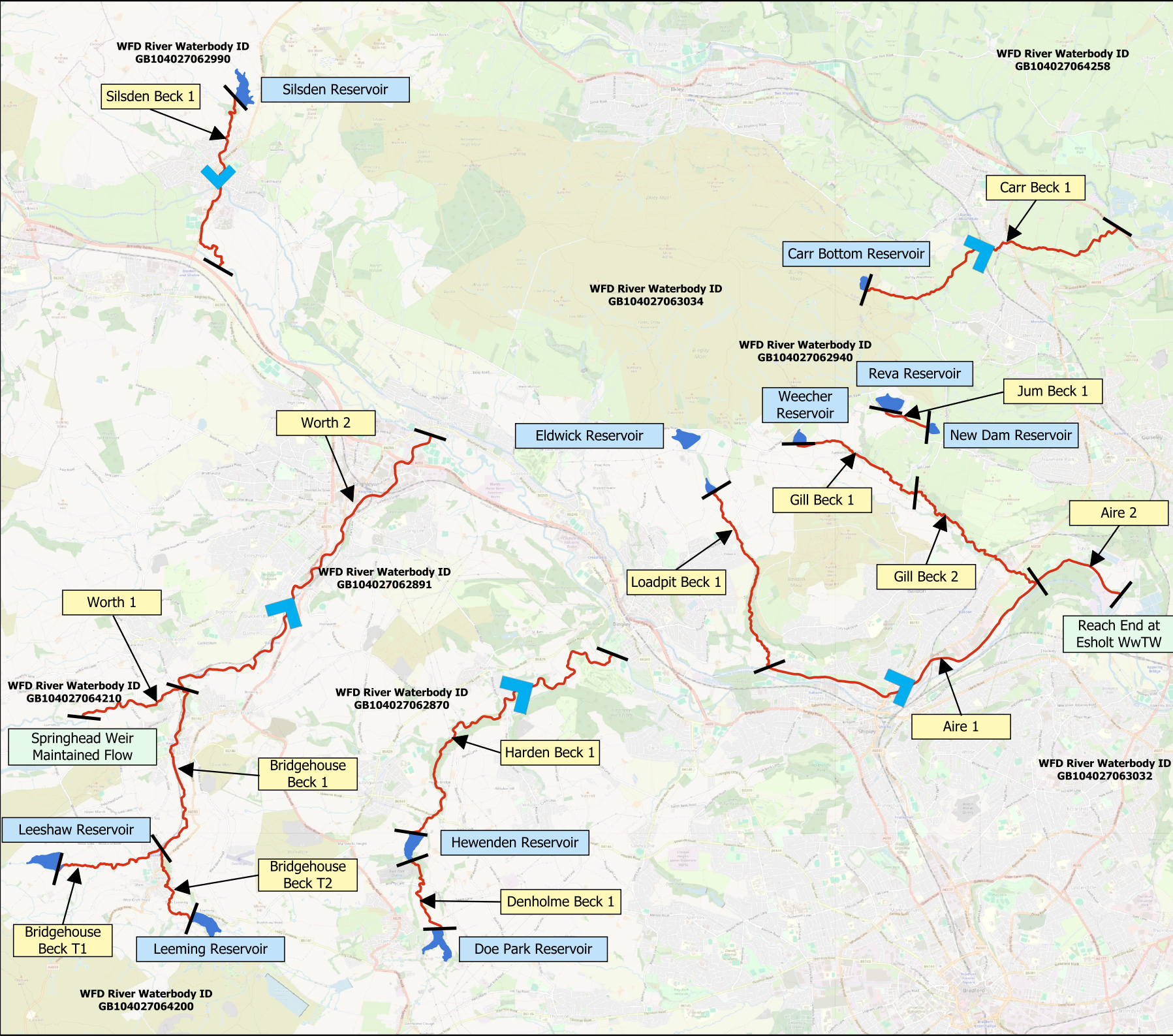
Date: Dec 2024

NGR: SE 01525 57666

Scale: 1:80,000

Note: All locations are approximate

© OpenStreetMap contributors OpenStreetMap® is open data, licensed under the Open Data Commons Open Database License (ODbL) by the OpenStreetMap Foundation (OSMF).

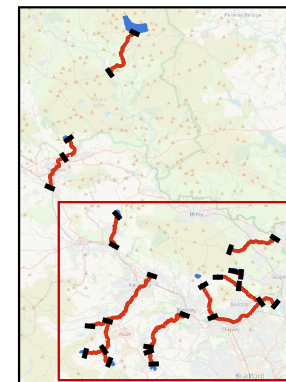


Legend

- Reach Divides
- River Reaches
- Reservoir
- WFD Management Catchment
- Flow Direction



Location of figure within North West Option area:



Project title:

Yorkshire Water Drought Plan
Environmental Assessment

Figure title:

North West Overview Map

Figure 4.2

Date: Dec 2024

NGR:SE 10122 41302

Scale: 1:80,000

Note: All locations are approximate

© OpenStreetMap contributors OpenStreetMap® is open data, licensed under the Open Data Commons Open Database License (ODbL) by the OpenStreetMap Foundation (OSMF).