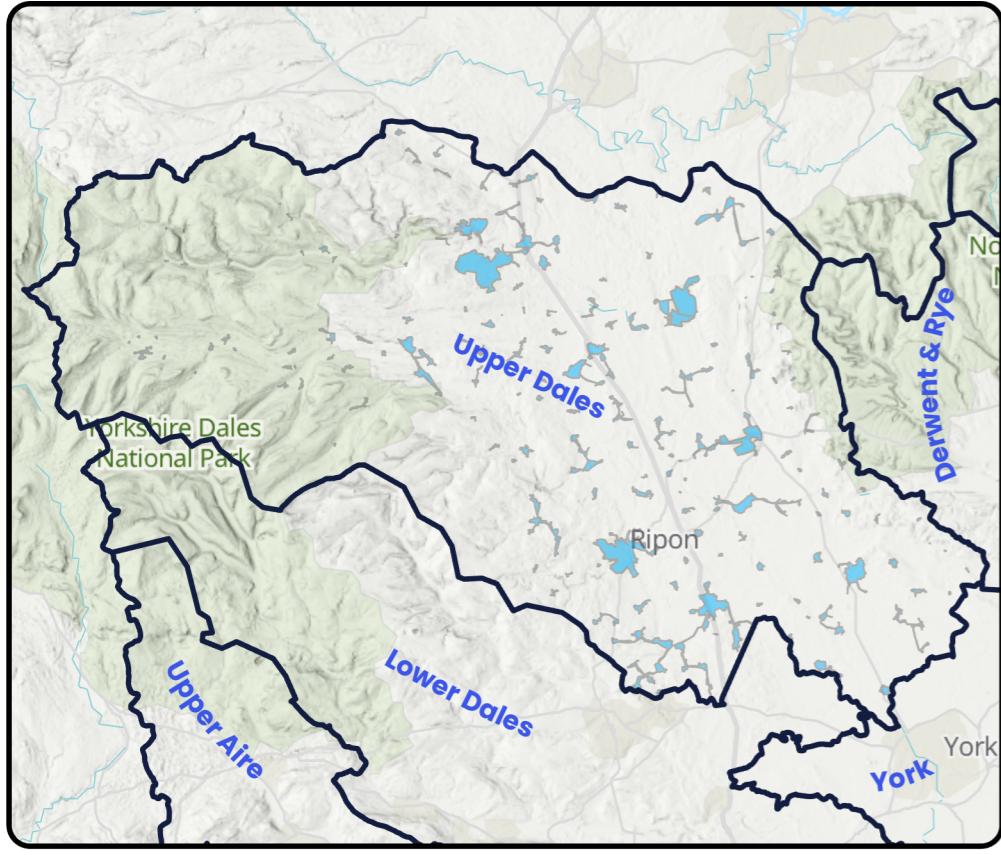
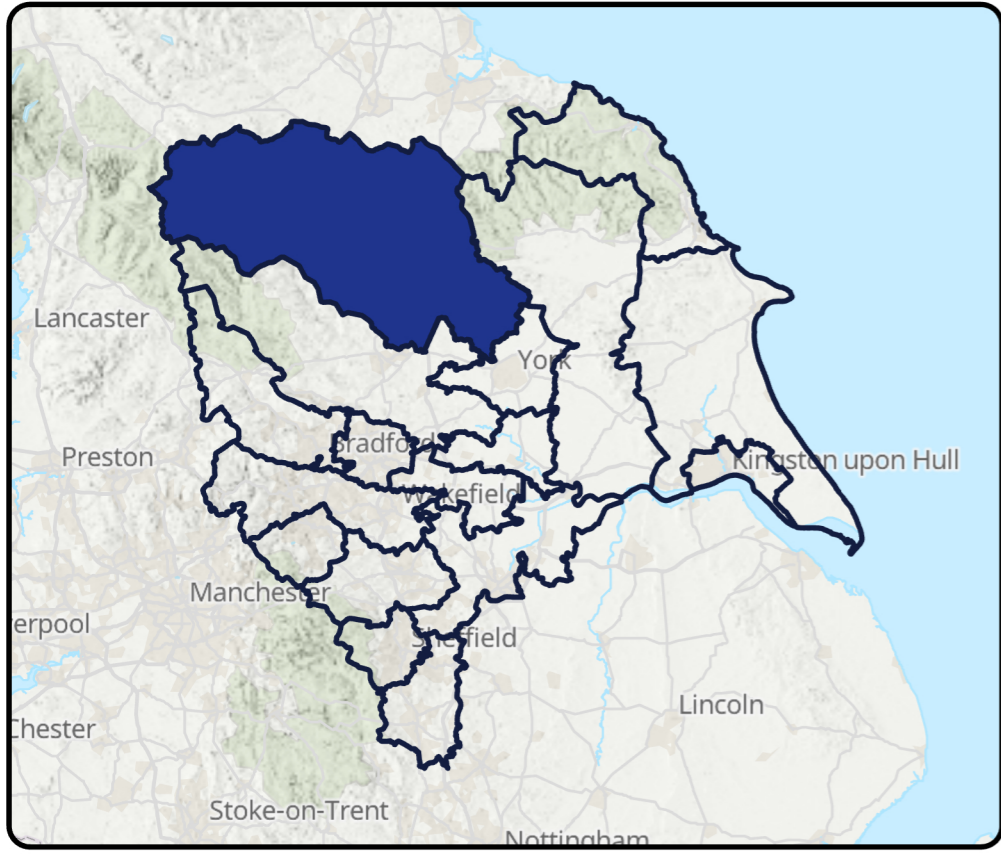
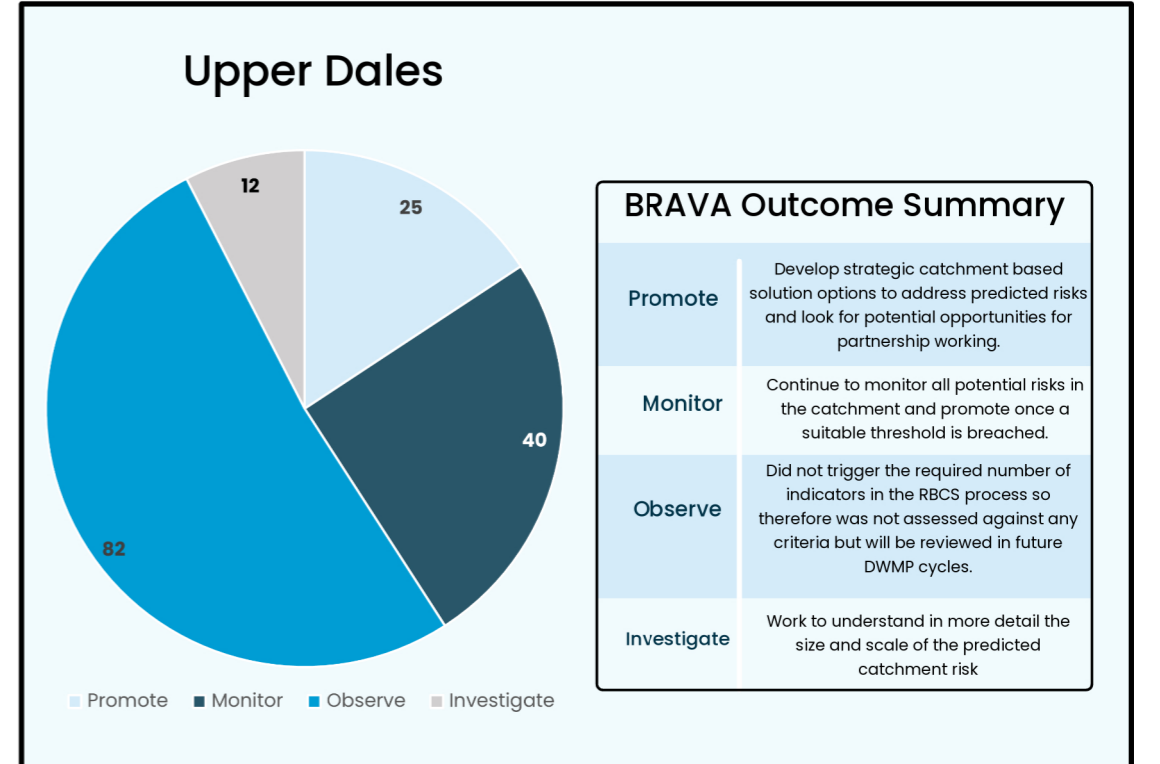


Upper Dales Strategic Planning Area



Key Strategic Planning Area Statistics

Number of WwTW Catchments	159
Population Equivalent in 2020	177,787
Population Equivalent in 2050	194,766
Population Equivalent Growth	10%
Proportion of Storm Overflows in L2	8%
Wastewater Pumping Stations	250
Foul and Combined Sewer Length	780km
Surface Water Sewer Length	290km
Catchments Passed Through To BRAVA	77



National Baseline Risk and Vulnerability Assessment

Internal Sewer Flooding 2020 Score	Pollution Risk 2020 Score	Sewer Collapse Risk 2020 Score	Risk of Sewer Flooding (1 in 50) 2020 Score	Risk of Sewer Flooding (1 in 50) 2050 Score	Storm Overflow Performance 2020 Score	Storm Overflow Performance 2050 Score	Risk of WwTW Compliance Failure 2020	Risk of WwTW Compliance Failure 2050
2	2	1	1	1	1	1	1	1

0 Not Significant 1 Moderately Significant Risk 2 Very Significant

Scenario 2

Deliver the requirements of the Storm Overflow Discharge Reduction Plan	<ul style="list-style-type: none"> Annual average of no more than 10 spills per storm overflow Annual bathing season average of no more than 2 spills per storm overflow discharging to coastal bathing waters, to support achieving excellent bathing water classification Annual bathing season average of no more than 1 spill per storm overflow discharging to inland bathing waters Installation of continuous water quality monitoring to assess any impact from storm overflows and wastewater treatment works discharge outlets Provision of screening at all storm overflows Ensure no local ecological harm from storm overflows
Reduce Modelled Hydraulic Flood Risk	Reduce model predicted risk of internal and external hydraulic sewer flooding of properties up to a 1 in 30 return period, compared to the 2050 position
Maintain WwTW Compliance	Ensure all of our wastewater treatment works remain compliant with current environmental permits and any future changes to permits

