

Setting the scene for our Drainage and Wastewater Management Plan

For the period 2030 – 2055

**A thriving Yorkshire.
Right for customers.
Right for the environment.**



How to view this document

Contents page

Our contents page links to every section within this document. Clicking on a specific section will instantly take you to it.

- 1 Click on the contents button to return to the contents page.
- 2 This button takes you to the previous page.
- 3 This button takes you to the next page.

There are also many other clickable links within this document which we've made easy to spot by underlining and **highlighting** them in blue.

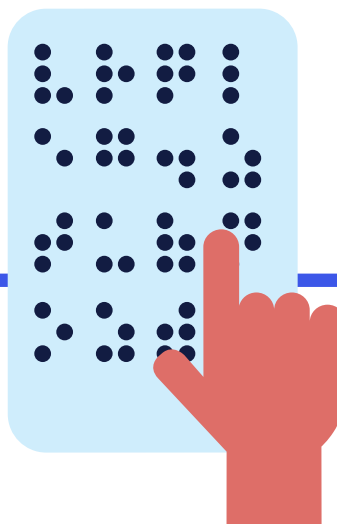
Accessibility matters. That's why we want all of our customers to be able to engage, navigate, and understand our Drainage and Wastewater Management Plan.

By using assistive technology like screen readers, text-to-text speech programmes and Braille displays, we can provide equal access to anyone with visual, mobility, or cognitive impairments.

We've taken steps to ensure this document supports additional accessibility needs:

- Screen readers will recite content in a logical order, as well as identifying headers and providing alternative text for images.
- Table of contents and bookmarks to aid navigation.
- Easy-to-read text that's structured using headings, clear paragraphs and tables.
- Comfortable colour contrast.

3



Contents

We've created colour-coded sections to help you to navigate this report easily. Just click on the section you are interested in on the contents page, and it will navigate you to that section.

The report is structured as follows:

Chief Executives Introduction	04
Our region, our customers	05
DWMP on a page	06
What does our DWMP mean for customers	07
Why do we need a Drainage and Wastewater Management Plan?	08
Our Approach	10
Our Catchments	12
Our wastewater process	13
What will we assess in our DWMP?	14
Core Performance Indicators	14
Complex and Emerging Performance Indicators	16
Future Trends	17
How will we develop and deliver our DWMP?	21
Partnership working	22
Catchment thinking	23
Science-based	23
Nature First solutions	24
Assessing the value of our plan	25
How will we assign our values?	26
How will we make our assessments?	27
How our DWMP will align with other plans?	28
Timescales for our DWMP	30
Finding out more about our DWMP	31



A note from our Chief Executive Officer, Nicola

Our Drainage and Wastewater Management Plan for 2030–2055 will help deliver our vision for 'A thriving Yorkshire: Right for customers. Right for the environment.'

Since the publication of our first Drainage and Wastewater Management Plan in 2023, the Department for Environment, Food and Rural Affairs (Defra), has revised their requirements and we are therefore underway with revising our plan. Our priority is to reduce the harm caused by wastewater, by preventing it from flooding homes, causing pollution and harming rivers; a priority which is supported by our customers, stakeholders and the communities across Yorkshire.

Our Drainage and Wastewater Management Plan will consider how our wastewater service provision, including the collection of sewage, its treatment and return to the environment, may be impacted by the changes around us over the next 25 years. This document sets out what we'll consider within our plan to allow our customers and stakeholders to know what they can expect.

In our plan, we'll:

- Focus on key wastewater service provisions and our interaction with the environment
- Identify opportunities to work collaboratively with stakeholders across Yorkshire
- Provide a resilient approach to wastewater management in the future.

We are already underway with delivering significant environmental improvements, including £1.5 billion to improve the performance of our storm overflows between the period 2025 – 2030. Our Drainage and Wastewater Management Plan will ensure we continue to future-proof our services.

We'll be assessing how trends such as climate change, population increase, urban development and asset health could impact our ability to deliver wastewater services and make sure we have a resilient, best-value plan to manage this in the future.

Throughout the development of our plan, we will focus on four key principles, aligning to our 'Right for the Environment' plan:

- We'll ensure that we engage with our stakeholders throughout the development of our plan; understanding what their priorities are and where there is opportunity to work in partnership.
- We'll assess how to best manage our wastewater systems to deliver holistic solutions and support the health of the region's rivers and coasts.
- We'll incorporate nature-based solutions by taking a nature first and best value approach.
- Finally, our Drainage and Wastewater Management Plan will be grounded in science; we'll continually make use of the best available data whilst developing our plan.

We recognise the scrutiny of our performance, high expectations of our sector and the need to keep our customers updated on our plans. We'll publish a draft of our plan in November 2027, alongside a 12-week public consultation, before we publish our final DWMP in August 2028. By developing our Drainage and Wastewater Management Plan will ensure we have robust assessments of our future wastewater performance, and detailed evidence to support our proposed future investments ensuring we can deliver more for our customers and the environment.

Nicola Shaw CBE
Chief Executive Officer



Our region, our customers



5.5 million
customers



2.2 million
households



1.3 billion
litres collected,
treated and
returned every day



14,000
business and
non-household
customers



53,000km
length of sewers



601
Wastewater
Treatment Works



2,633
wastewater
pumping stations



2,192
storm
overflows

DWMP on a page

Our Drainage and Wastewater Management Plan is our plan for the future. It will make sure we protect and enhance the Yorkshire region.

In our DWMP, we'll:



Assess our pipes and wastewater treatment assets.



Include future challenges, including climate change, population change and urban development.



Consider short, medium and long-term risks and investment needs.



Develop our plan using data driven approaches.



Produce a best-value plan for our customers.



Engage and work with our partners at each stage of the DWMP.



Consult with our customers and provide updates on our website.

Please read on to find out more about our DWMP.

What does our DWMP mean for customers?

Our DWMP is an opportunity for customers to understand how we plan for wastewater and the benefits it will bring to Yorkshire.



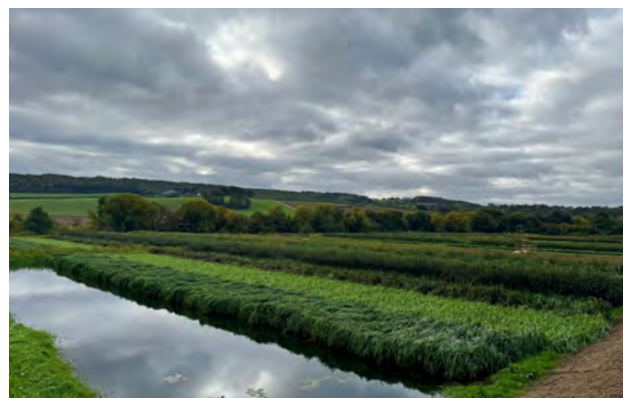
Give you a clearer, more transparent view of how we are planning for the future.



Allow you to comment and engage on proposals and see how we onboard your feedback.



Allow you to explore our future plans geographically and find out what is proposed for your local area.



Give you insight into how we plan to deliver best value solutions across the region.

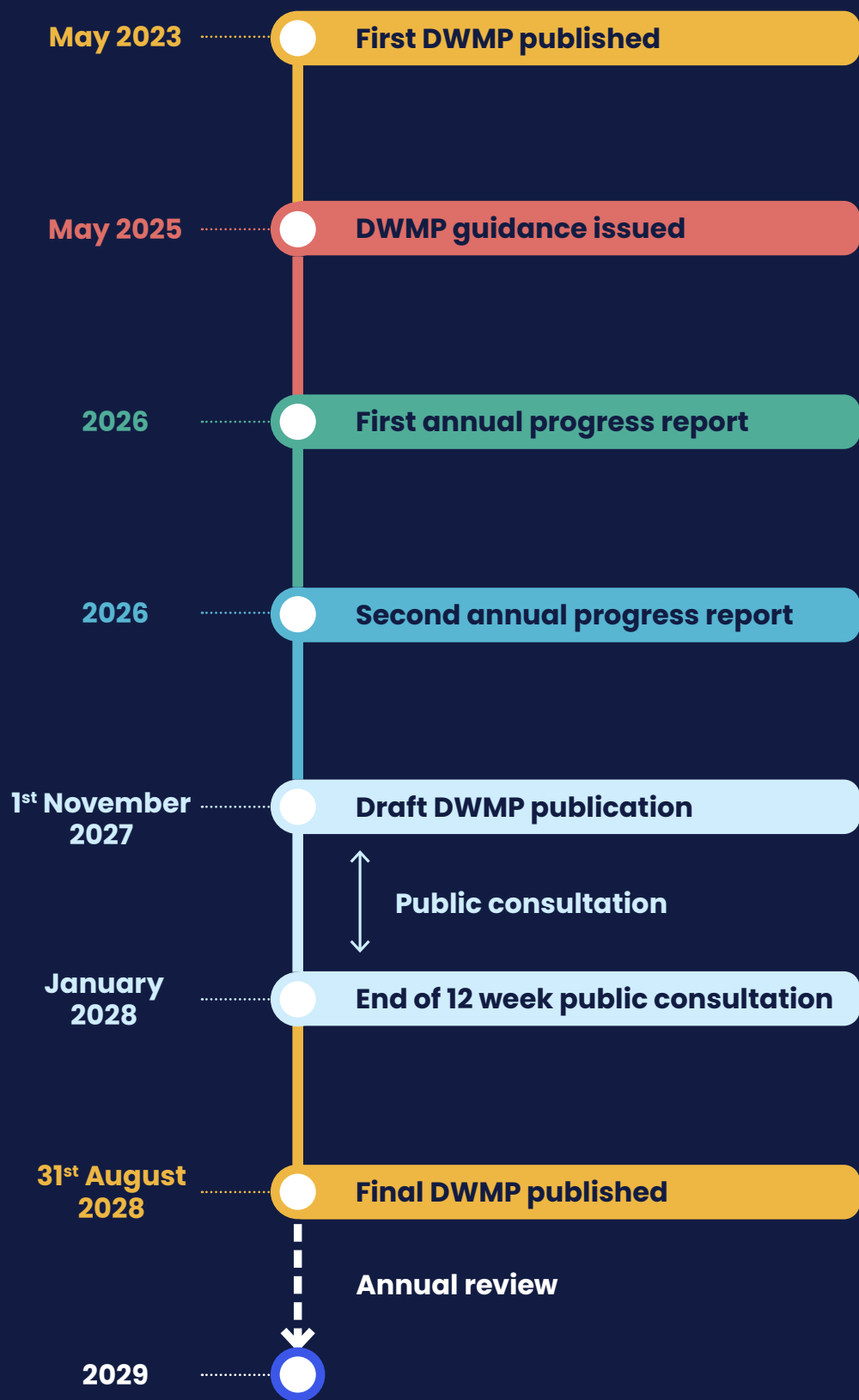
Why do we need a Drainage and Wastewater Management Plan?

Planning for the future, and working with our customers and stakeholders, lets us be effective in providing our customers with the wastewater services they want. This effective planning allows us to be resilient for the future, and identify opportunities to work collaboratively across our catchments, all whilst continuing to protect the environment around us.

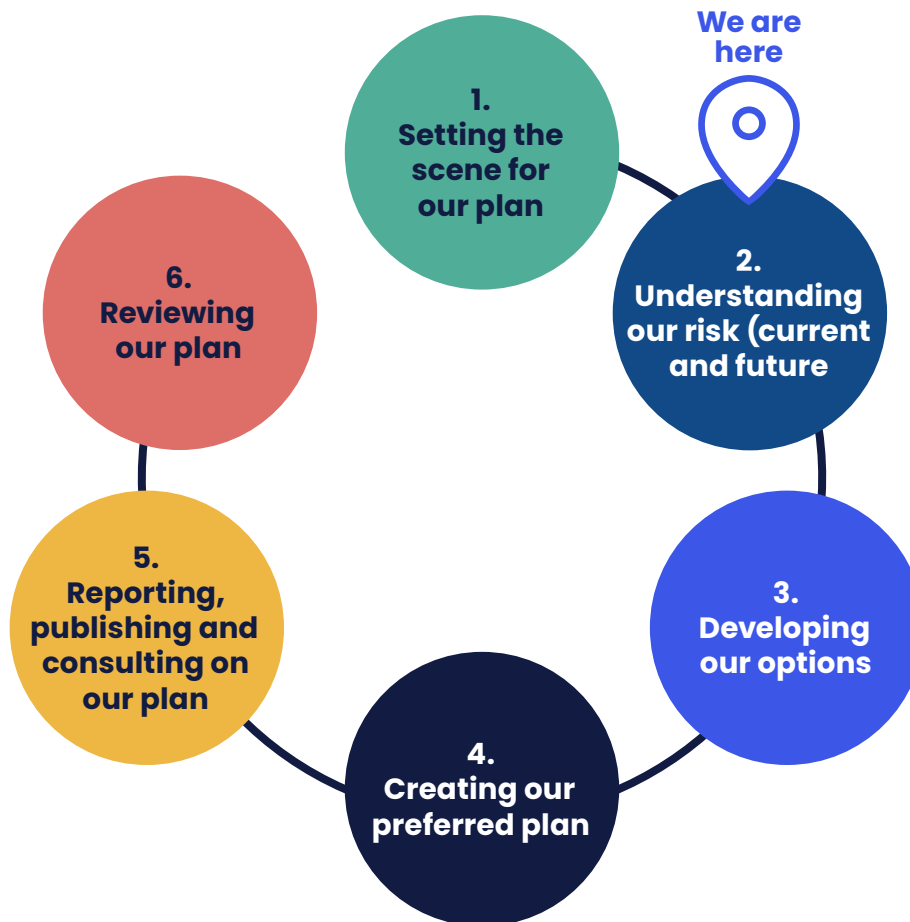
We know that the future will bring change which may impact on the wastewater services we provide; this includes changes to climate, local weather patterns, population and urban development. Our Drainage and Wastewater Management Plan (DWMP) will assess the scale and impact of these changes on our wastewater services and consider our approaches to managing this in the future.

We'll work collaboratively with stakeholders across Yorkshire as we develop our DWMP. We'll look at how our systems might be impacted by other drainage systems and the environment, where we might have areas of shared risk and what our stakeholder priorities are across Yorkshire. We'll regularly engage with stakeholders including local authorities, the Environment Agency, Rivers Trusts and other organisations throughout all stages of developing our plan.

We'll produce our DWMP in line with the statutory [DWMP guidance](#) produced and published by Defra in May 2025. We'll produce a DWMP every five years, each of these will be published on our website with an opportunity for our customers and stakeholders to comment on this during a public consultation. Ahead of our DWMP's publication, we'll also publish an annual progress report to provide an update on our underway activities.



Our Approach



We'll produce our DWMP through these stages:



1. Setting the scene for our plan

As detailed within this document, we set the scene for our DWMP. When setting the scene, we identify the trends we will consider in our plan and set out our approach to assessing the benefits of our proposed interventions to make sure we'll deliver a best value plan. We also set out the key wastewater performance areas we'll consider when developing our DWMP, our 'Performance Indicators' (PIs); these performance indicators will be used for assessing our future performance.



2. Understanding our risk (current and future)

In this stage, we'll use a data driven approach to assess how our wastewater systems operate from the present day through to 2055. We'll consider our systems' current performance against each PI, before considering how this may change into the future; taking into account future trends such as climate change, population growth and urban development. We'll use a range of tools to understand our performance across our wastewater assets and make use of the best available data.



3. Developing our options

Once we have understood our risk, we'll consider the interventions and options that we could deliver across our wastewater assets in Yorkshire to manage this risk. We'll consider a range of options throughout the development of our DWMP including nature-based solutions and traditional infrastructure solutions; these will form the basis of our options toolkit which we'll use apply to individual assets and catchments to understand the best approach. We'll consider the environmental effects of our plan through a Strategic Environmental Assessment and Habitat's Risk Assessment. We'll work with our stakeholders across Yorkshire to identify any opportunities to work collaboratively in the development and potential future delivery of our options.

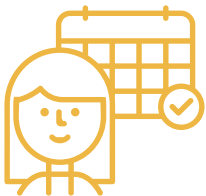


4. Creating our preferred plan

Once we have developed our range of options, we'll undertake a best value assessment of these using our value framework to create our preferred plan. When using our value framework to assess our plan, we'll consider the cost of each solution in line with a six capitals assessment:

- | | |
|-------------------------|-------------------------|
| a. Financial capital | d. Human capital |
| b. Manufactured capital | e. Intellectual capital |
| c. Natural capital | f. Social capital |

Our preferred plan will phase proposed investment between 2030 – 2055 to deliver the best value for our customers. This preferred plan will be used as part of the evidence base for our future wastewater Price Review submissions.



5. Reporting, publishing and consulting on our plan

Our customers are at the centre of our business so, once we have produced our draft DWMP, we'll open up a 12-week public consultation in November 2027. This will allow our customers and stakeholders to review our plan and provide comments on this. We'll review every consultation response, and where required, we'll make updates to our DWMP before publishing the final version of our plan in August 2028.



6. Reviewing our plan:

It is vital that our plan stays up to date and is reflective of any changes to our current performance, any changes to our predicted future trends as well as any future legislative changes and environmental guidance. We plan to review our DWMP annually to assess for any material changes and publish an updated report.

Our Catchments

We'll assess risk to our wastewater service and consider how performance may change across the Yorkshire region, recognising that our assets and actions sit within, and contribute to, the wider socio-economic and environmental ecosystems of the region. In our DWMP, we will report at three core catchment scales.

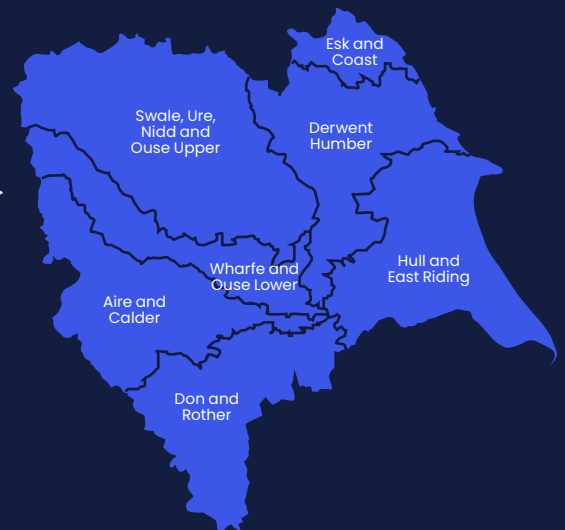


Level 1

Our Level 1 catchment reflects our wastewater operating boundary and will allow us to develop our overarching best value plan for Yorkshire. Our Level 1 catchment will allow us to assess and understand our future performance and the investment requirements across Yorkshire over the next 25 years.

Level 2

Our Level 2 catchments will reflect our main river catchments in Yorkshire; allowing us to consider solutions at a catchment scale and how we can work collaboratively with stakeholders. For our DWMP, we have seven Level 2 catchments. Where required, we will also engage at more locally including Local Authority scale to enable more detailed conversations on local risks and plans.



Level 3

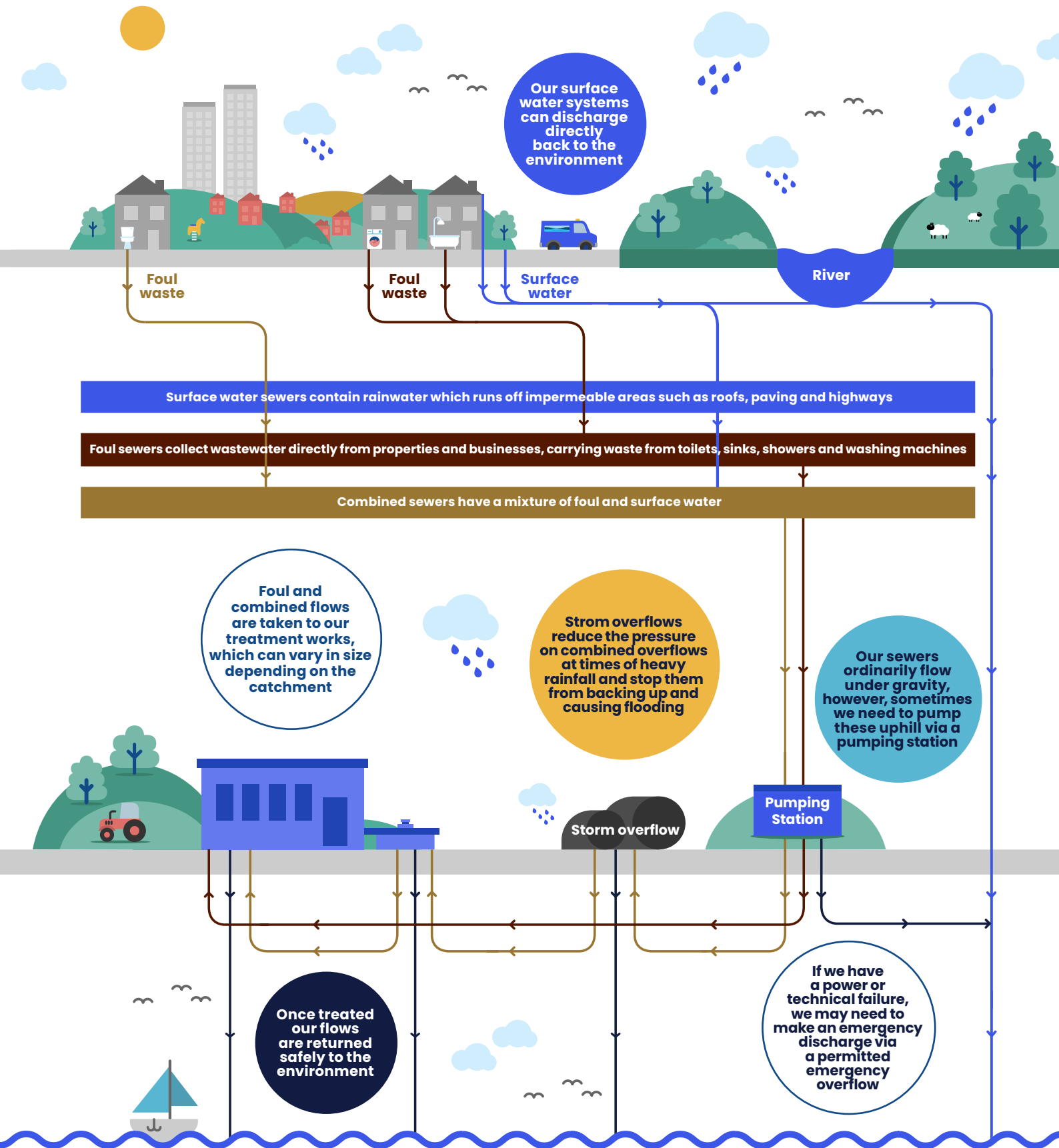
Our Level 3 catchments represent our wastewater treatment works catchments and will be the foundational building block to developing our DWMP. We have 601 level 3 catchments, each defined by their final effluent discharge location to the environment. Each includes a wastewater treatment works and the upstream public sewer network draining to them.



Level 4

In some instances, we might consider a smaller sub-catchment of our Level 3 wastewater treatment works catchment. This will help us look at localised risk or solutions where these may be interconnected.

Our wastewater system


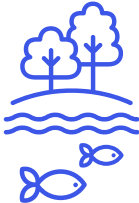




What will we assess in our DWMP?

In our DWMP, we'll be assessing how our wastewater performance may change over time. To do this, we'll assess metrics called 'Performance Indicators'. These performance indicators cover the services which are important to our customers and stakeholders. By looking at how our performance changes with time, we'll identify the future investment needed across Yorkshire to make sure we comply with our legislative requirements including the Urban Wastewater Treatment Directive, the Environment Act and the Flood and Water Management Act. This forward-looking approach will make sure our wastewater systems are resilient to change and that we continue to protect and enhance the Yorkshire region.

Core Performance Indicators

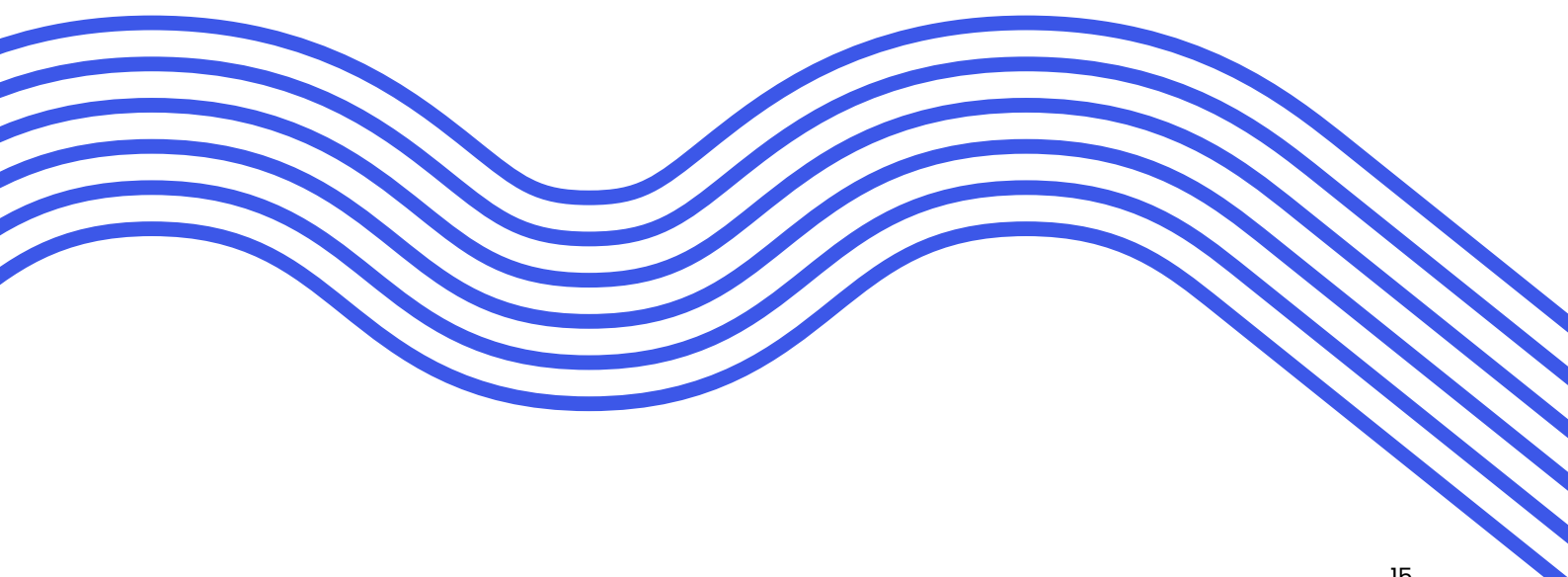
We'll consider the following core performance indicators, in line with Defra guidance:

Category	Performance Indicator	Summary
 Flooding	Internal Sewer Flooding	The annual number of properties predicted to be at risk from internal sewer flooding. This PI will consider properties at risk from flooding due to sewers being overwhelmed or overloaded during heavy rainfall as well as sewer flooding caused by operational issues such as blockages.
	External Sewer Flooding	The annual number of external property curtilages predicted to be at risk from sewer flooding. This PI will consider properties at risk from flooding due to sewers being overwhelmed or overloaded during heavy rainfall as well as sewer flooding caused by operational issues such as blockages.
 Water Environment	Storm Overflows	The number of storm overflows predicted to be at risk of not meeting the Government's Storm Overflow Discharge Reduction Plan (SODRP) and/or permit non-compliance.
	Wastewater Treatment Works Compliance	<p>We'll be assessing four PIs in relation to wastewater treatment works compliance, assessing their relevant permits as issued by the Environment Agency:</p> <ul style="list-style-type: none"> • Numeric permit compliance: the annual number of wastewater treatment works predicted to fail a numeric effluent quality permit limit • Descriptive permit compliance at numeric sites: the annual number of wastewater treatment works predicted to fail to meet their descriptive conditions at numeric permit sites. • Dry weather flow (DWF) permit compliance: the annual number of wastewater treatment works predicted to fail meeting their Dry Weather Flow (DWF) permit conditions. • Flow to full treatment (FFT) permit compliance: the annual number of wastewater treatment works predicted to fail meeting their Flow to Full Treatment (FFT) permit conditions.

Category	Performance Indicator	Summary
 <p>Water Environment</p>	<p>River Water Quality: Good Ecological and/or Chemical Status attributed to public sewerage assets</p>	<p>The number of waterbodies predicted to not achieve 'Good' ecological or chemical status, in direct relation to public sewerage assets, as defined under the Water Framework Directive. This PI will explore the Environment Agency's 'Reasons for not achieving good' or 'RNAG' datasets.</p>
	<p>Pollution Incidents</p>	<p>We'll be assessing two PIs in relation to pollution incidents occurring as a result of public sewerage assets:</p> <ul style="list-style-type: none"> • Serious pollution incidents: the annual number of forecast serious (Category 1 and 2) pollution incidents • Total pollution incidents: the annual number of forecast total (Category 1 – 3) pollution incidents <p>As per the Defra DWMP guidance, these PIs will exclude sludge/ biosolids incidents.</p>
 <p>Economy & Community</p>	<p>Bathing Water Quality</p>	<p>The number of current and future designated inland and coastal bathing waters where predicted performance of sewerage asset discharges will pose a compliance risk to 'sufficient' classification and not deteriorating from current standards, with a view to increasing the number of 'good' or 'excellent' classifications under the Bathing Water Regulations.</p>

Please note, within the Defra DWMP guidelines, there is an additional shellfish water quality performance indicator, which is not applicable to the Yorkshire region. We do not currently have any shellfish designations under the Shellfish Waters Protected Areas Directions, however, throughout the development of our DWMP and future iterations will continue to monitor any future designations.


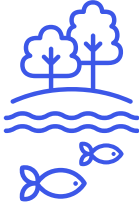
Where possible, we'll utilise Defra's Performance Indicator definitions to align to our Performance Commitments to Ofwat and the Environment Agency's Environmental Performance Assessment (EPA) metrics.



Complex and Emerging Performance Indicators

We'll also assess the following complex performance indicators. Defra recognises that these are more complex, may have a shared responsibility with other organisations or may need more complex methods of assessment and further development of assessment methodologies.

Within our DWMP, we'll trial approaches to assessing these to work collaboratively and deliver best service to our customers.

Category	Performance Indicator	Summary
 Flooding	Surface Water Flooding (shared responsibility)	Annual number of properties predicted to be at risk of surface water flooding. This PI will explore third party datasets including the Environment Agency's updated National Flood Risk Assessment maps (NaFRA). This PI is shared responsibility as water and sewerage companies are not directly responsible for surface water flooding.
	River Water Quality: Good Ecological and/or Chemical Status attributed to urban and transport discharges (shared responsibility)	The number of waterbodies predicted to not achieve 'Good' ecological or chemical status, in relation to discharges from urban/highway runoff and misconnections. This PI will explore the Environment Agency's 'Reasons for not achieving good' or 'RNAG' datasets. This PI is shared responsibility as it considers discharges and connections outside water companies' direct responsibility.
Water Environment	Emergency Overflow Performance	The number of emergency overflows that are predicted to operate once or more per year.
	Wastewater Treatment Works Compliance at Descriptive Permit Assets	The number of wastewater treatment works predicted to fail to meet their descriptive permits.
	Groundwater Pollution	The length of sewers (in km) within source protection zones and groundwater safeguard zones where there are likely risks to the groundwater from sewer exfiltration.
	Groundwater Infiltration	The forecast annual number of sewer discharges during 'dry weather' caused by groundwater infiltration into the sewer network.

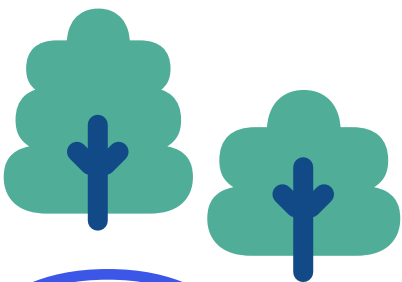
A photograph of two workers in safety gear. The worker in the foreground is wearing a grey hard hat with the Yorkshire Water logo, safety glasses, and an orange high-visibility jacket. The worker in the background is wearing a white hard hat and a bright yellow high-visibility jacket with reflective stripes and the Yorkshire Water logo. They are standing in an industrial setting with various pipes and structures visible in the background.

Future Trends

We know the world around us is changing, and that these changes have the potential to impact the wastewater services we provide and future solutions we consider.

To achieve resilience in a changing environment requires careful strategic planning; designed not only to address potential challenges and future risks but also to seize emerging opportunities. Therefore, to make sure that our DWMP is robust, we will consider a range of future trends through to 2055 and assess how these may impact our wastewater services so that we're prepared to adapt to future changes.

To support this, we've developed a robust set of future scenarios which will help us manage future uncertainty. In these scenarios, we have considered 12 key factors of change. Throughout the development of our DWMP, we'll consider how each of these factors could impact on the services or solutions we provide.





Climate change

We know the climate has and will continue to change - impacting our wastewater services and the environment around us. In our DWMP, we'll explore how climate related trends could impact our performance, including:

- Wetter winters and drier summers
- Increase in intensity and frequency of storm events

Environmental change

We depend on our natural environment and the ecosystems it supports, we also have the ability to heavily impact it. How our environment changes, can affect our wastewater performance, which in-turn can negatively impact the environment. Throughout our DWMP, we will consider changes including:

- Changes in river flows
- Changes to river temperatures
- Changes to sea levels



Population change

We expect our populations across Yorkshire to increase in the future. This includes the developments of new homes and communities across the region, in line with the Governments ambition to build 1.5 million homes in the current parliament.

We'll use the latest population forecasts and development plans to consider how the expected growth and change in distribution of our populations will impact the wastewater services we provide and what investments we may need in the future.

Affordability and support

Changing economic conditions, such as growth or recession, can make customers circumstances change. This means that customers may struggle to pay for bills and other services and be less willing to accept bill increases. This influences the investment YW may need to make in the future.



Infrastructure investment, maintenance and type

Our capacity to pay for, plus the type of infrastructure we build and its associated maintenance activities has changed. Influenced by fluctuating economic conditions and a greater focus on nature-based solutions. We'll take this into account as we develop our DWMP.

Regulatory change



Regulatory changes can impact activities within the water industry at a range of scales. For example, at a national scale, in 2025, the Independent Water Commission undertook a review of the water sector and set out 88 recommendations for future change. The government has responded to this with 'A New Vision for Water' in early 2023 and subsequent regulatory changes are expected. At a local scale, changes to environmental designations, including newly designated bathing waters, could change our investment requirements. We'll monitor and consider regulatory change at both a national and local scale and plan accordingly within our DWMP.

System integration and catchment management

The way in which catchment risks are identified managed has the ability to impact our DWMP. Risks could be considered at asset level, catchment level or holistically considered across sectors and communities. We'll consider the progression towards a systems-based approach to developing solutions when developing our DWMP.



Progress towards net zero



National and international pathways for greenhouse gas emission targets can impact and transform the way we operate as an organisation. We'll consider net zero targets throughout the development of our DWMP, and how this may change the solutions we consider.

Social awareness and influence

What customers expect of the water industry can change, so we must be able to adapt to customers' needs into the future. Similarly, our customers' behaviours can also impact our wastewater service provision, for example:

- Misuse of non-flushable products including wet wipes and fats, oils and greases.
- Awareness of water usage and water saving measures changing consumption levels.

We'll consider how changes in social awareness and influence could impact what is required under our DWMP, and how our proposed solutions can include working with our customers.



Political attitude and stability

Changes in local, regional and political attitudes and direction have the potential to impact the water industry. We'll evaluate potential implications to political attitudes and stability within our DWMP.





Technology

As technologies advance, the types of solutions we consider in the future could change. Advances in technology and an increase in data availability, accuracy and confidence can all shape the way we assess our wastewater service provision and the future solutions we could deliver. Within our DWMP, we'll consider how to adapt to make best use of future technology

Skills and people

The skills required in the water industry can change over time – having an impact on attracting, developing and retaining qualified professionals. We'll consider the skills required from an end-to-end process perspective throughout the delivery of our DWMP.



How will we develop and deliver our DWMP?

In our Right for the Environment plan, we set four key principles for making sure our plans are Right for the Environment.



Partnership working



Science based



Catchment thinking



Nature first solutions

Each of these principles is essential to the way we'll develop our DWMP. We'll look to develop the best options for Yorkshire by working in collaboration with our stakeholders, considering a whole catchment approach, using the best available data to make sure our approach is grounded in science and identifying opportunities to work with nature through our solutions.

Partnership working



Our DWMP will embed partnership working from the outset of our strategic planning.

By engaging and collaborating with a range of stakeholders and organisations, we can unlock wider information to make better informed decisions and transform the way we manage wastewater.

In Yorkshire, we already have a rich history of working in partnership, including our work with [Living with Water](#) and [Connected by Water](#) partnerships. We're also establishing our Strategic Partnerships Centre of Excellence which will build on our collaborative experience. We'll strengthen our history of collaboration and learning from others whilst further developing our culture of partnership working.

This will help us to work more effectively with others, allowing us to deliver better services, more innovative solutions and greater value and benefits for our customers.

Throughout the development of our DWMP, we'll maximise our existing relationships with our partners across Yorkshire. We'll be engaging regularly with stakeholders across the region at a tactical level, utilising our existing relationships with partners and forums to facilitate collaborative discussions. To help us set the strategic direction of our DWMP, making sure this reflects the needs of our customers, communities, and stakeholders across Yorkshire, we'll also be establishing our Stakeholder Steering Group. This forum will be pivotal to our stakeholder engagement plans and will make sure we develop a plan that reflects regional priorities and promotes collaborative working.

Case study: **Living with Water**

Hull and the surrounding areas are among the most vulnerable to climate risks in the UK. With much of the city lying below sea level and a complex drainage network, the risk of flooding remains a significant challenge.

The Living with Water (LWW) partnership – comprising Yorkshire Water, Hull City Council, East Riding of Yorkshire Council, and the Environment Agency, with the University of Hull as our academic partner – brings together expertise from multiple disciplines to manage and mitigate flood risk.

Our ambition is to create a city that thrives with water by delivering sustainable, long-term solutions with local communities at the heart of every project. This vision is guided by the LWW Blue-Green Plan, a 25-year strategy aimed at strengthening flood resilience in Hull.

In 2025, we have continued to make significant progress, with multiple projects underway across Hull and the East Riding. In particular, three active schemes in Bilton, Derringham, and Orchard Park are enhancing



flood resilience through the installation of Sustainable Drainage Systems (SuDS).

We have also expanded our education and outreach initiatives in 2025, with things such as integrating SuDS into two local schools, providing students with hands-on learning opportunities about sustainable water management. Our water butt scheme also continues to support residents by offering free water butts to households in our project areas, helping to reduce surface water runoff and promote water conservation.

Catchment thinking



Catchment thinking helps to consider the connectivity of our natural and built environment and can help us to think about risk resolution across a whole catchments rather than breaking it down into individual projects.

Throughout the development of our DWMP, we'll apply a catchment thinking mindset. This may consider catchments of different scales; for example in one catchment we may be able to provide an optimised solution for a localised cluster of storm overflows and flood risk issues, whilst in another, we may want to think about an entire Level 3 catchment differently. Catchment solutions may allow us to deliver broader benefits within the catchment when compared to standalone solutions; we'll make sure that we always deliver the best value for our customers when we take a catchment approach.

Science-based



Drainage and wastewater systems can be complex with many interfaces to the natural environment. Understanding and forecasting how future changes could impact on our service levels requires a varied set of assessment tools.

Our DWMP will be grounded in proven and agreed methodologies whilst considering the use of innovative technologies and ways of working to improve data quality. We'll make use of the best available data at the time of developing our DWMP.

By using a science-based approach in our DWMP, we'll make sure that our strategies are grounded in the latest technology and following best practice as set out within our Right for the Environment strategy.

We'll also share data, information and facilitate knowledge exchange throughout the development of our DWMP. We'll share the outputs of our DWMP through an interactive, spatially displayed portal which our customers and stakeholders will be able to access online.

Nature first solutions



Nature first is our commitment to use nature-based solutions as our preferred way to deliver our services. Nature-based solutions either use natural processes or mimic natural processes to reduce risk, solve a problem or deliver a service.

Through using nature-based solutions, we can deliver a more resilient wastewater service for our customers whilst mitigating and adapting to climate change risks.

We've already delivered nature-based solutions at some of our assets across Yorkshire, and our first DWMP (for the period 2025 – 2050) explored the use of traditional infrastructure alongside nature-based solutions for all of our storm overflows in Yorkshire. Using the outputs from our DWMP, we committed to delivering at least 20% of our storm overflow WINEP interventions with a nature-based solution element included in our [Price Review for 2025 – 2030](#).

In our DWMP, we're committed to our Nature first commitment, and will continue to build on our existing commitments and successes by addressing the use of nature-based solutions in our plan.

Case study:

Clayton West Integrated Constructed Wetland

Following a water quality investigation into the River Dearne, we've developed a 4.3 hectare integrated constructed wetland (ICW) at our Clayton West Wastewater Treatment Works was found to be contributing to failure of ammonia standards on the River Dearne. As a result, we have developed a 4.3 hectare integrated constructed wetland (ICW) at our Clayton West Wastewater Treatment Works. The wetland contains 13 interconnected ponds and is the largest integrated constructed wetland to treat storm flows in the UK. The scheme resulted in a 60% reduction in

embodied carbon, and a 40% reduction in operational carbon, compared to a traditional grey infrastructure solution.

Over 300,000 specially selected plants have been planted at the wetland, which will treat the wastewater before it's returned to the River Dearne. The scheme enhances biodiversity and local amenity; with a public right of way around the perimeter of the site, allowing members of the public to enjoy the landscape.



Assessing the value of our plan

Our DWMP will provide a best value plan, which means we'll consider the cost of our investment alongside the benefits it delivers.

To do this, we'll utilise our value framework to enable us to assess the benefits of the solutions we develop throughout our DWMP.

What is a value framework?

A value framework provides a robust approach to assessing the benefits each solution may offer. We do this by assessing the benefits looking beyond the traditional financial considerations of investment and considering the wider value that solutions can bring to the region.

For example, alongside a service improvement such as reducing storm overflow spills, solutions may bring improved environmental and social benefits to the region such as improved access to green space and improved biodiversity. These benefits will differ depending on the type of solution being considered. By applying a consistent value framework, we can assess which solutions will bring the best value to Yorkshire.

Value frameworks support benefits assessments by assigning monetary values to each benefit. Our value framework utilises a six capitals approach, allowing us to consider the following factors within our best value assessments:

We evaluate our solutions by assessing the below six capitals:



Financial capital considers the financial health and efficiency of our investment decisions.



Manufactured capital includes assessments of infrastructure, such as sewers and treatment works required to enable the delivery of our services.



Natural capital evaluates the benefits from the natural environment to society including factors such as water quality, recreational and amenity value.



Human capital allows for the consideration of factors including employment, skills and health and wellbeing to be quantified.



Intellectual capital allows values from knowledge and processes to be assessed, including advances in innovation.



Social capital incorporates value relating to our relationships and trust with our customers and stakeholders across Yorkshire.

How will we assign our values?

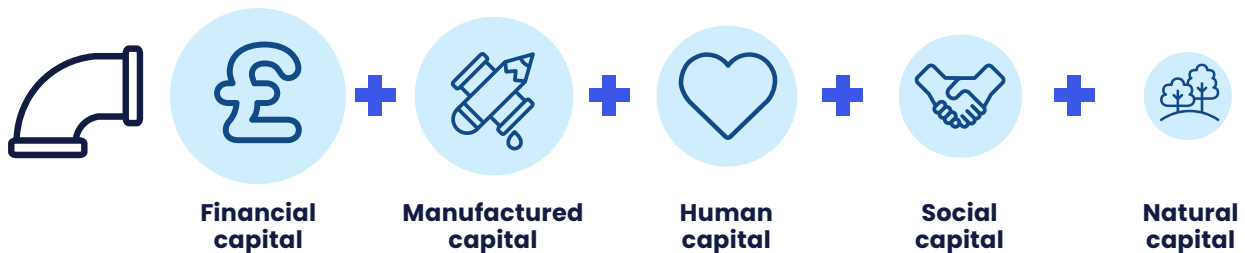
We want to make sure that our cost estimates and benefits are clearly defined and measurable as well as comparable across our strategic plans including our Water Resources Management Plan (WRMP) and our Price Reviews (PR). As such, we developed our Service Measure Framework (SMF) in the lead up to our PR19 business plan submission.

This framework was originally developed utilising extensive research and customer engagement to make sure the values we utilise reflect the priorities and preferences of our customers across the region. This approach was shared and discussed with our Yorkshire Forum for Water Customers throughout its development.

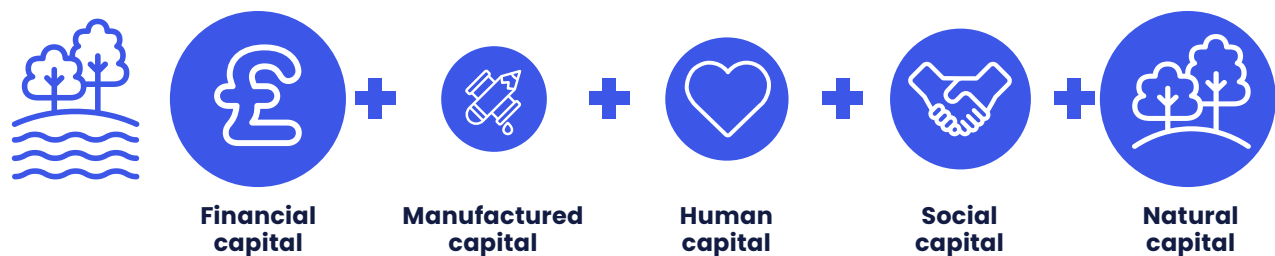
Since established, we have continued to mature our approaches to our Service Measure Framework. This includes work currently underway to review the Common Value Framework or 'CVF' developed through the [Mainstreaming Nature-Based Solutions project](#), as published in 2026. The CVF, funded through the Ofwat Innovation Fund, aims to support a consistent and comparative approach to assessing investment across the water industry. We will review this CVF alongside our existing SMF to make sure our approach to assessing our valuations and investment decisions remain robust and reflects the latest available evidence.

Our SMF will allow us to assign valued benefits based on the types of solutions we are considering. The diagram below shows the difference in total capital benefits between a traditional engineering-led solution when compared to a nature-based solution. This demonstrates how nature-based solutions can bring additional benefits when evaluated using a more sustainable approach to risk and benefits valuation.

Assigning benefits



Assigning benefits



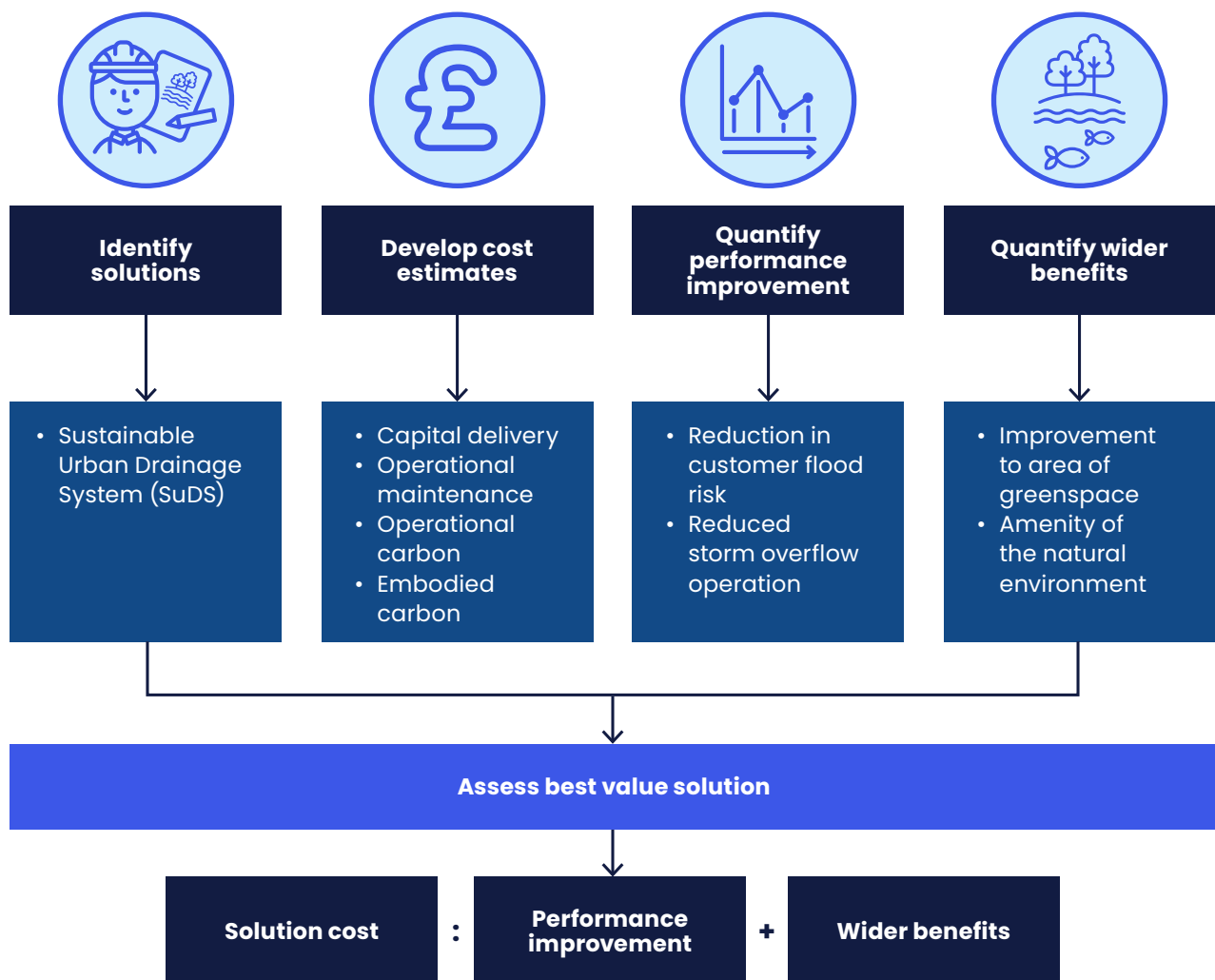
More information on the development of our SMF can be found within our [PR19](#) and [PR24](#) Price Review documents.

How will we make our assessments?

To develop our cost estimates, we use nationally recognised methods to assess long term costs, following HM Treasury’s Green Book and the Spackman approach to whole life costing.

For our benefits assessment, we’ll utilise our SMF to make sure that our investment provides the best value to our customers.

To define our best value plan, we’ll consider the cost estimates and the benefits of each of our options. The option with the best ratio between the cost estimate of the solution and the financial value of the benefits, will be considered the best value approach:

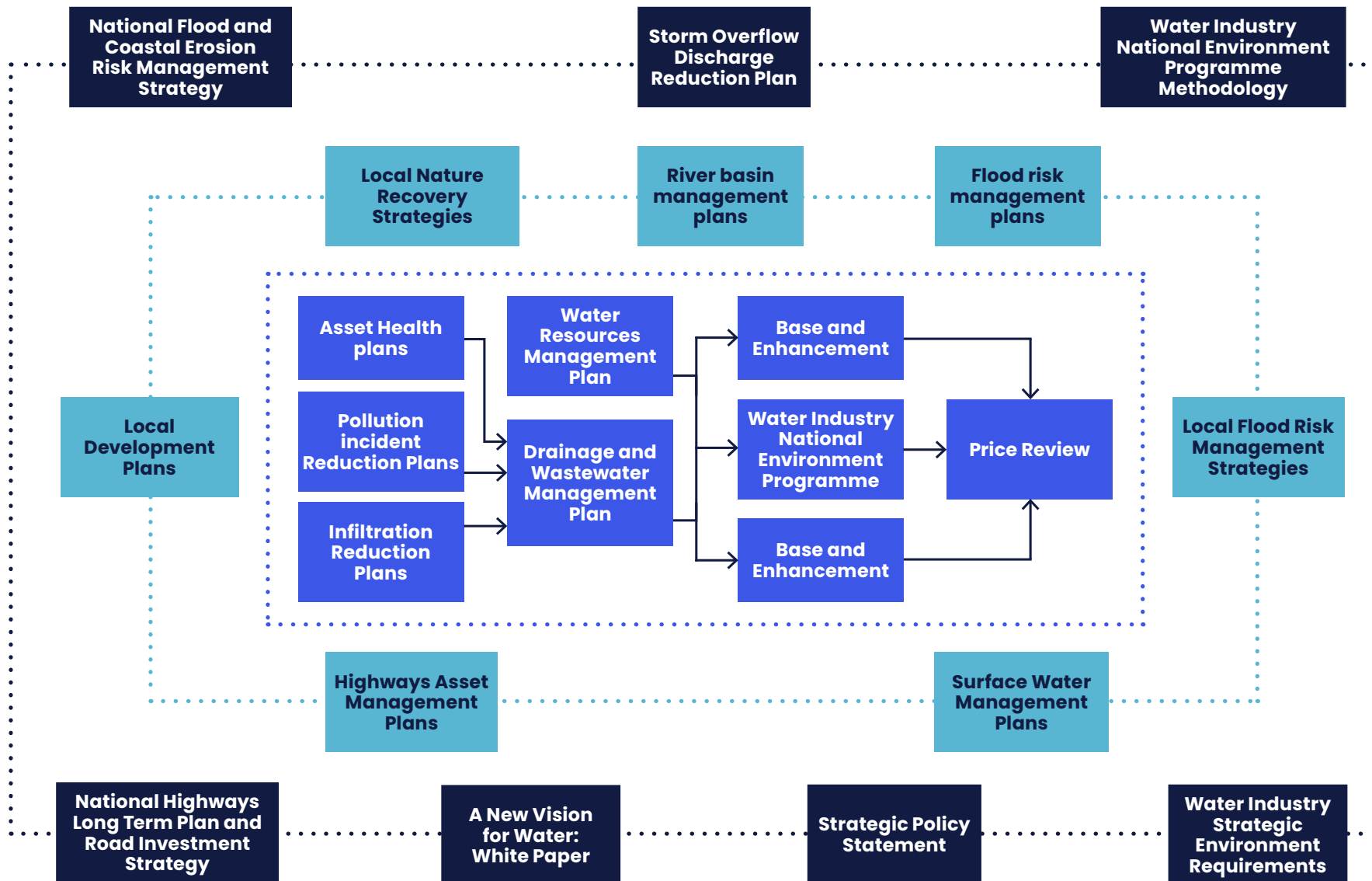


How our DWMP will align with other plans?

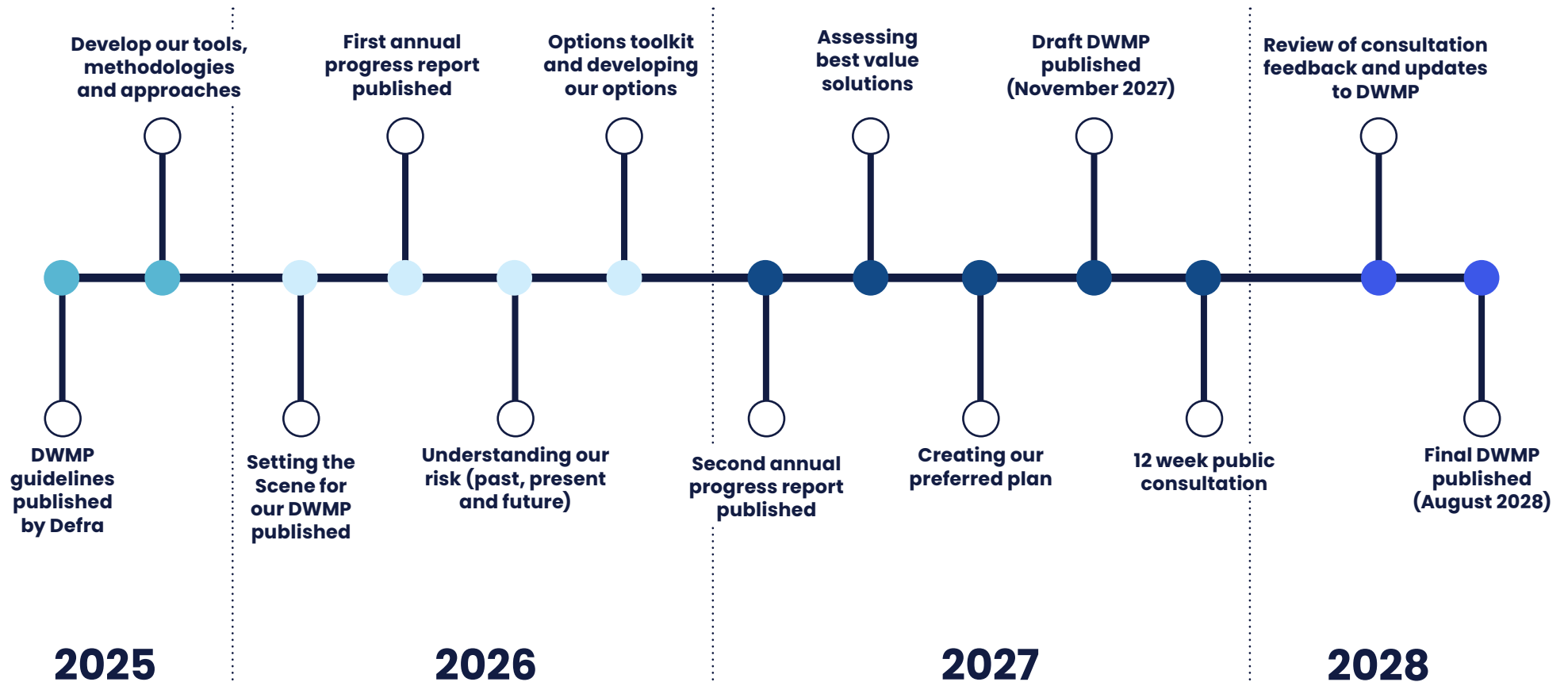
We know planning for drainage and wastewater can be complex with multiple organisations involved who each have their own strategic requirements. To make sure that our DWMP is effective at delivering a resilient wastewater service for our customers, stakeholders and the environment, we need to take an integrated approach.

To do this, we'll make sure that we have considered how our DWMP will align:

- **At a company level:** we'll ensure our strategic planning frameworks are aligned and build on actions identified in our tactical plans including our Pollution Incident Reduction Plans (PIRPs) and Infiltration Reduction Plans (IRPs). We'll make sure our DWMP is embedded into our Water Industry National Environment Programme (WINEP). Strategically, similarly to our DWMP, we produce a long-term plan for water resources. Our Water Resources Management Plan (WRMP) sets out how we'll ensure a sustainable and secure supply of water for our region. Throughout our DWMP and WRMP, we'll align our long-term planning where possible; assessing how we can utilise the same future trends and planning assumptions.
- **With local or tactical plans and strategies:** across Yorkshire, there are a vast array of stakeholders involved in water and environmental planning. We'll engage with our stakeholders, including the Environment Agency, local authorities (such as planning, highways and flood departments), internal drainage boards and Rivers Trusts to assess where there are synergies between our plans and how these can be aligned, making sure we have thorough and transparent communication.
- **With national or strategic plans or strategies:** we'll make sure national strategies are included in our DWMP. In the water industry, there are currently numerous policies and plans involved in setting strategic directions including the 'New Vision for Water' white paper, the Strategic Policy Statement and the Storm Overflow Discharge Reduction Plan. We'll continue to evaluate these, as well as any further strategic updates set out within the Governments transition plan.
- **To required timescales and delivery milestones:** although the DWMP spans a 25-year period, phasing may be governed by defined milestones set out in regulatory guidance. The DWMP will align the timing and phasing of investment with the required service levels and statutory targets, such as the phased improvements to priority storm overflows set out in the Storm Overflow Discharge Reduction Plan.



Timescales for our DWMP



Finding out more about our DWMP

Keeping our customers, communities and stakeholders updated throughout the development of our DWMP is important to us. We'll make sure that we set out the benefits of our investment to our customers and communities within our DWMP.

You can find out more:



On our website:

Our dedicated webpage will include all our latest updates, including access to regular newsletters on the production of our DWMP and all our published documents.



In our Annual Progress Report:

As we continue developing our DWMP, we'll publish an annual progress report each year on our website where you can see how we are progressing for each of our wastewater treatment catchments.



During our Consultation:

Hearing our customers' and stakeholders' views on our DWMP is important to us. Once we've published our Draft, we'll open a 12-week public consultation where you will have the opportunity to share your feedback ahead of our final DWMP publication.



By visiting our hub:

We'll be creating a digital mapping portal to keep our customers and stakeholders updated. By visiting our hub, you can explore the places across Yorkshire you're interested in.

Thank you for reading



Yorkshire Water Services Limited,
Western House, Halifax Road, Bradford, BD6 2SZ.
Registered in England and Wales No.02366682

yorkshirewater.com



YorkshireWater