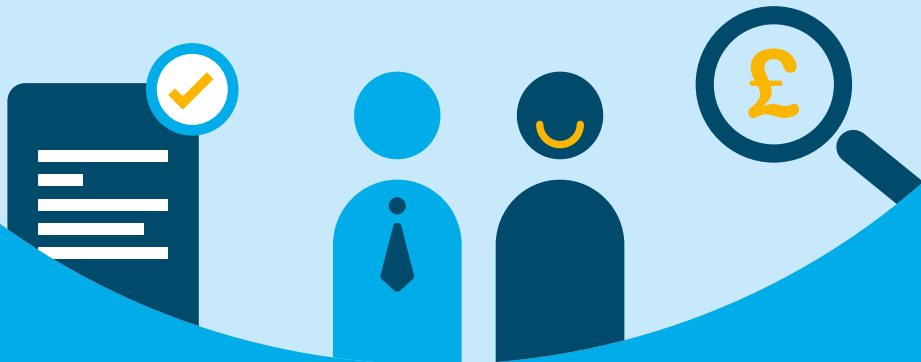


Yorkshire Water Indicative Wholesale Charges 2018 - 2019



Yorkshire Water

Indicative wholesale charges publication 2018-19

Directors' Statement

As a Director of Yorkshire Water at the time of the publication of the company's indicative Wholesale Charges, I the undersigned, confirm that:

- a) so far as I am aware, there is no relevant audit information of which the auditors of the company's indicative Wholesale Charges are unaware; and
- b) I have taken all the steps that I ought to have taken as a director in order to make myself aware of any relevant audit information and to establish that the auditors of the company's indicative Wholesale Charges are aware of the information.

Consistent with the Companies (Audit, Investigations and Community Enterprise) Act 2004.

And that, to the best of my knowledge, having made all due inquiries and based on sources of evidence, that:

- c) the company complies with its legal obligations relating to the indicative Wholesale Charges it has published.
- d) The Board has assessed the effects of the new charges on water supply and sewerage licensees (as a whole or in groups) who are retailing wholesale services and on customers occupying Eligible Premises (as whole or in groups) and approves the impact assessments and handling strategies developed in instances where bill increases for licensees (as a whole or in groups) who are retailing wholesale services and on customers occupying Eligible Premises (as a whole or in groups) exceed 5%;
- e) The company has appropriate systems and processes in place (including up-to-date models and data) to make sure that the information published about its indicative Wholesale Charges is accurate; and
- f) The company has consulted with relevant stakeholders in a timely and effective manner on its indicative Wholesale Charges.



Anthony Rabin
Chairman



Richard Flint
Chief Executive



Liz Barber
Director



Nevil Muncaster
Director



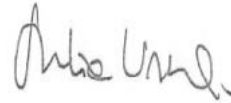
Pamela Doherty
Director



Ray O'Toole
Director



Teresa Robson-Capps
Director



Julia Unwin
Director



Andrew Wylie
Director



Andrew Dench
Director



Michael Osborne
Director



Scott Auty
Director



Chantal Forrest
Company Secretary

Non-Household Stakeholder Contact Information

**Existing and potential Water Supply and
Sewerage Licensee (WSSL):**

[Wholesale Service Desk](#)

[Please call on 0344 9020228](#)

[Email: wholesaleservicedesk@yorkshirewater.com](mailto:wholesaleservicedesk@yorkshirewater.com)

Non-Household customers:

[Please contact your retailer directly.](#)

Yorkshire Water Main Offices:

[Head Office and Registered Office:](#)

[Western House, Western Way,](#)

[Halifax Road, Bradford, BD6 2SZ](#)

[Tel: \(01274\) 691111](#)



The Yorkshire Water Services Limited Indicative Wholesale Charges 2018 - 2019

About this document

This document sets out a summary of the indicative primary wholesale charges for 2018 – 19 of Yorkshire Water Services Limited (Yorkshire Water) made in line with the Wholesale Charging Rules issued by Ofwat under sections 66E and 1171 of the Water Industry Act 1991.

These are the charges we expect to set for 2018-19 based on the information available at this time subject to the list of potential variations as set out below;

- updates to information in respect of underlying charging base movements and
- wholesale charges are limited by inflation-linked revenue controls set by Ofwat. Final charges will depend on the rate of inflation as per the Retail Price Index for November, which will be published on 13 December 2017.

The wholesale charges scheme is to be used in conjunction with the codes:

mosl.co.uk/open-water/codes

Please refer to the 'Wholesale charges scheme 2017-18' for interpretations, terms and conditions.

yorkshirewater.com/business/services#1s2

This document contains our signed Board Assurance Statement. The Board Assurance Statement was signed following our assurance of the process in calculating the Charges.

All charges contained within this document are subject to the addition of any VAT chargeable.

Final wholesale charges will be published January 2018.

Summary Indicative Non-Household Wholesale Charges 2018 – 2019

WATER SUPPLY WHOLESAL CHARGES (EXCLUDING YORK WATERWORKS)

Unmeasured non-household

Standing charge	Nil
Rateable value charge	145.77p per £RV
Minimum charge	£39.46

Measured non-household

Standing charge	Nil
Volumetric charge for users less than 50 thousand cubic meters p.a.	
0-5 thousand cubic metres p.a.	131.54p m ³
5≤ 50 thousand cubic metres p.a.	131.54p m ³
Volumetric charge for users above 50 thousand cubic meters p.a.	
≤50 thousand cubic metres p.a.	131.54p m ³
>50 ≤250 thousand cubic metres p.a.	83.33p m ³
>250 thousand cubic metres p.a.	70.85p m ³

WATER ASSESSED WHOLESAL CHARGES (EXCLUDING YORK WATERWORKS)

Property Size	Volume	£ per annum
Small	145m ³	£190.73
Medium	255m ³	£335.43
Large	550m ³	£723.47
Extra large	1,000m ³	£1,315.40

SEWERAGE WHOLESALE CHARGES

Unmeasured non-household

Standing charge	Nil
Rateable value charge	169.02p per £RV
Minimum charge	£45.35

Measured non-household

Standing charge	Nil
Volumetric charge for users less than 50 thousand cubic meters p.a.	
0- 5 thousand cubic metres p.a.	159.12p m ³
5≤ 50 thousand cubic metres p.a.	159.12p m ³
Volumetric charge for users above 50 thousand cubic meters p.a.	
≤50 thousand cubic metres p.a.	159.12p m ³
>50 ≤250 thousand cubic metres p.a.	128.34p m ³
>250 thousand cubic metres p.a.	117.12p m ³

Surface water charge

Band	Surface area in square meters			Charge £
A	0	–	500	£43.24
B	501	–	700	£101.18
C	701	–	1,000	£151.77
D	1,001	–	2,000	£202.36
E	2,001	–	15,000	£404.72
F	15,001	–	35,000	£3,035.37
G	35,001	–	150,000	£7,082.53
H		>150,000		£30,353.17

SEWERAGE ASSESSED WHOLESALE CHARGES

Property Size	Volume	£ per annum
Small	145m ³	£219.19
Medium	255m ³	£385.47
Large	550m ³	£831.40
Extra large	1,000m ³	£1,511.64

TRADE EFFLUENT WHOLESALE CHARGES

R – reception and conveyance

Standard charge 0- 5 thousand cubic metres p.a.	46.55p per m ³
Standard charge 5≤ 50 thousand cubic metres p.a.	46.55p per m ³
≤50 thousand cubic metres p.a.	46.55p per m ³
>50 ≤250 thousand cubic metres p.a.	26.27p per m ³
>250 thousand cubic metres p.a.	17.55p per m ³
V* - Preliminary treatment	46.03p per m ³
Bv - Biological treatment	41.74p per m ³
S* - Sludge treatment*	27.57p per m ³
Minimum charge (annual)	£442.56
Os - Biological strength of combined sewage (COD)	840mg/litre
Ss - Sludge strength of combined sewage (StS)	335mg/litre

Summary of Indicative Non-Household Wholesale Charges York Waterworks 2018 – 2019

WATER SUPPLY WHOLESAL CHARGES YORK WATERWORKS

Unmeasured non-household

Standing charge	Nil
Rateable value charge	83.25p per £RV
Fixed charge	£21.85

Measured non-household

Standing charge	Nil
Volumetric charge for users less than 50 thousand cubic meters p.a.	
0- 5 thousand cubic metres p.a.	72.84p
≤ 50 thousand cubic metres p.a.	72.84p
Volumetric charge for users above 50 thousand cubic meters p.a.	
≤50 thousand cubic metres p.a.	72.84p
>50 ≤250 thousand cubic metres p.a.	63.98p
>250 thousand cubic metres p.a.	63.98p

WATER ASSESSED WHOLESAL CHARGES YORK WATERWORKS

Property Size	Volume	£ per annum
Small	145m ³	£105.62
Medium	255m ³	£185.74
Large	550m ³	£400.62
Extra large	1,000m ³	£728.40

Indicative Household Wholesale Charges 2018 – 2019

Please refer to the 'Yorkshire water Charges Scheme 2017-18' for Household charges interpretations, terms and conditions. The following charges are subject to the addition of any VAT chargeable.

WATER SUPPLY HOUSEHOLD WHOLESALE CHARGES (EXCLUDING YORK WATERWORKS)

Unmeasured non-household

Standing charge*	£32.74
Rateable value charge	145.77p per £RV
Minimum charge	£82.30

Measured non-household

Standing charge	£9.56
Volumetric	134.69p

*These charges do not apply to lock-up garages

WATER ASSESSED HOUSEHOLD WHOLESALE CHARGES (EXCLUDING YORK WATERWORKS)

Property Size	£ per annum
Single person household	£79.60
Other household premises	£125.39
Semi- detached house	£144.25
Detached house	£175.23

SEWERAGE HOUSEHOLD WHOLESALE CHARGES

Unmeasured Household

Standing charge - Sewerage	Nil
Standing Charge – Surface Water	£40.31
Rateable Value Charge	169.02p per £RV
Rateable Value Charge – Septic Tanks	93.00p per £RV

Measured Household

Standing charge	Nil
Standing Charge - Surface Water	£35.22
Volumetric charge	167.04p per m ³

SEWERAGE ASSESSED HOUSEHOLD WHOLESALE CHARGES

Property Size	£ per annum
Single person household	£117.74
Other household premises	£171.69
Semi- detached house	£193.91
Detached house	£230.41

WATER SUPPLY HOUSEHOLD WHOLESALE CHARGES YORK

Unmeasured Household

Standing charge*	£25.11
Rateable value charge	83.25p per £RV
Minimum charge	£53.41

Measured Household

Standing charge	£9.56
Volumetric	76.29p per m ³

*These charges do not apply to lock-up garages

WATER ASSESSED HOUSEHOLD WHOLESALE CHARGES YORK

Property Size	£ per annum
Single person household	£59.15
Other household premises	£81.28
Semi- detached house	£95.01
Detached house	£114.85

Indicative Non-Household Wholesale Charges 2018 – 2019 OFWAT PR14 Template

Schedule for measured wholesale water supply. Standard charges for Yorkshire Water

VOLUMETRIC CHARGES PER M3 – FALLING BLOCK TARIFF (FORECAST VOLUME SHOWN VERTICALLY)	RATE OF INDIVIDUAL FALLING BLOCKS SHOWN HORIZONTALLY						
	0-20MI	20-50MI	50-100MI	100-150MI	150-250MI	250-3,000MI	Over 3,000MI
<20MI	1.3154	1.3154	0.8333	0.8333	0.8333	0.7085	0.7085
20-50MI	1.3154	1.3154	0.8333	0.8333	0.8333	0.7085	0.7085
50-100MI	1.3154	1.3154	0.8333	0.8333	0.8333	0.7085	0.7085
100-150MI	1.3154	1.3154	0.8333	0.8333	0.8333	0.7085	0.7085
150-180MI	1.3154	1.3154	0.8333	0.8333	0.8333	0.7085	0.7085
180-250MI	1.3154	1.3154	0.8333	0.8333	0.8333	0.7085	0.7085
250-750MI	1.3154	1.3154	0.8333	0.8333	0.8333	0.7085	0.7085
750-3,000MI	1.3154	1.3154	0.8333	0.8333	0.8333	0.7085	0.7085
3,000MI	1.3154	1.3154	0.8333	0.8333	0.8333	0.7085	0.7085

Schedule for measured wholesale water supply. Standard charges for York

VOLUMETRIC CHARGES PER M3 – FALLING BLOCK TARIFF (FORECAST VOLUME SHOWN VERTICALLY)	RATE OF INDIVIDUAL FALLING BLOCKS SHOWN HORIZONTALLY						
	0-20MI	20-50MI	50-100MI	100-150MI	150-250MI	250-3,000MI	Over 3,000MI
<20MI	0.7284	0.7284	0.6398	0.6398	0.6398	0.6398	0.6398
20-50MI	0.7284	0.7284	0.6398	0.6398	0.6398	0.6398	0.6398
50-100MI	0.7284	0.7284	0.6398	0.6398	0.6398	0.6398	0.6398
100-150MI	0.7284	0.7284	0.6398	0.6398	0.6398	0.6398	0.6398
150-180MI	0.7284	0.7284	0.6398	0.6398	0.6398	0.6398	0.6398
180-250MI	0.7284	0.7284	0.6398	0.6398	0.6398	0.6398	0.6398
250-750MI	0.7284	0.7284	0.6398	0.6398	0.6398	0.6398	0.6398
750-3,000MI	0.7284	0.7284	0.6398	0.6398	0.6398	0.6398	0.6398
3,000MI	0.7284	0.7284	0.6398	0.6398	0.6398	0.6398	0.6398

Schedule for unmeasured wholesale water supply Standard charges for Yorkshire Water

UNMEASURED WATER

Standing / fixed charge	£ Per annum
Assessed - Small (145m3)	190.73
Assessed - Medium (255m3)	335.43
Assessed - Large (550m3)	723.47
Assessed - Extra Large (1000m3)	1315.40
Assessed - Fixed Charge	39.46
Variable	£ per unit
RV < £1,001	1.4577
RV £1,001 - £5,000	1.4577
RV £5,001 - £50,000	1.4577
RV >£50,000	1.4577
Other	£ Per annum
Single lock-up garage	39.46

Schedule for measured wholesale water supply Standard charges for York

UNMEASURED WATER

Standing / fixed charge	£ Per annum
Assessed - Small (145m3)	105.62
Assessed - Medium (255m3)	185.74
Assessed - Large (550m3)	400.62
Assessed - Extra Large (1000m3)	728.40
Assessed - Fixed Charge	21.85
Variable	£ per unit
RV < £1,001	0.8325
RV £1,001 - £5,000	0.8325
RV £5,001 - £50,000	0.8325
RV >£50,000	0.8325
Other	£ Per annum
Single lock-up garage	21.85

Schedule for measured wholesale sewerage

AREA-BASED CHARGES (£ P.A.)			
FIXED CHARGE	SURFACE WATER DRAINAGE ONLY	HIGHWAY DRAINAGE ONLY	SURFACE WATER AND HIGHWAY DRAINAGE
0-20 m2	43.24	N/A	N/A
21-99 m2	43.24	N/A	N/A
100-124 m2	43.24	N/A	N/A
125-199 m2	43.24	N/A	N/A
200-299 m2	43.24	N/A	N/A
300-349 m2	43.24	N/A	N/A
350-499 m2	43.24	N/A	N/A
500-649 m2	101.18	N/A	N/A
650-749 m2	101.18	N/A	N/A
750-9,999 m2	151.77	N/A	N/A
1,000-1,499 m2	202.36	N/A	N/A
1,500-1,999 m2	202.36	N/A	N/A
2,000-2,499 m2	404.72	N/A	N/A
2,500-2,999 m2	404.72	N/A	N/A
3,000-4,999 m2	404.72	N/A	N/A
5,000-6,999 m2	404.72	N/A	N/A
7,000-7,499 m2	404.72	N/A	N/A
7,500-9,999 m2	404.72	N/A	N/A
10,000-11,999 m2	404.72	N/A	N/A
12,000-14,999 m2	404.72	N/A	N/A
15,000-17,999 m2	3,035.37	N/A	N/A
18,000-19,999 m2	3,035.37	N/A	N/A
20,000-24,999 m2	3,035.37	N/A	N/A
25,000-29,999 m2	3,035.37	N/A	N/A
30,000-34,999 m2	3,035.37	N/A	N/A
35,000-39,999 m2	7,082.53	N/A	N/A
40,000-44,999 m2	7,082.53	N/A	N/A
45,000-49,999 m2	7,082.53	N/A	N/A
50,000-74,999 m2	7,082.53	N/A	N/A
75,000-99,999 m2	7,082.53	N/A	N/A
100,000-124,999 m2	7,082.53	N/A	N/A
125,000-149,999 m2	7,082.53	N/A	N/A
150,000 m2 and above	30,353.72	N/A	N/A

Schedule for measured wholesale sewerage

VOLUMETRIC CHARGES – FALLING BLOCK (FORECAST VOLUME SHOWN VERTICALLY)	RATE OF INDIVIDUAL RISING BLOCKS SHOWN HORIZONTALLY					
	0-5MI	5- 50MI	50-100MI	100-250MI	>250MI	Separate standing charge
0-5	1.5912	1.5912	1.2834	1.2834	1.1712	N/A
5-50MI	1.5912	1.5912	1.2834	1.2834	1.1712	N/A
50MI	1.5912	1.5912	1.2834	1.2834	1.1712	N/A
100MI	1.5912	1.5912	1.2834	1.2834	1.1712	N/A
150MI	1.5912	1.5912	1.2834	1.2834	1.1712	N/A

Foul, highway and surface water (unmeasured)

UNMEASURED WASTEWATER (£ P.A.)				
FIXED CHARGES	FOUL ONLY	FOUL AND HIGHWAY DRAINAGE	SURFACE WATER DRAINAGE AND HIGHWAY DRAINAGE	FULL (FOUL, SURFACE WATER DRAINAGE, AND HIGHWAY DRAINAGE)
Assessed - Small (145m3)	N/A	219.19	N/A	N/A
Assessed - Medium (255m3)	N/A	385.47	N/A	N/A
Assessed - Large (550m3)	N/A	831.40	N/A	N/A
Assessed - Extra Large (1000m3)	N/A	1,511.64	N/A	N/A
Assessed - Fixed Charge	N/A	45.35	N/A	N/A

UNMEASURED WASTEWATER (£ PER UNIT)

VARIABLE CHARGES	FOUL ONLY	FOUL AND HIGHWAY DRAINAGE	SURFACE WATER DRAINAGE AND HIGHWAY DRAINAGE	FULL (FOUL, SURFACE WATER DRAINAGE, AND HIGHWAY DRAINAGE)
Per poundage of RV	N/A	1.6902	N/A	N/A
RV min< £50	N/A	1.6902	N/A	N/A
RV 50-1001	N/A	1.6902	N/A	N/A
RV £1,001 - £5,000	N/A	1.6902	N/A	N/A
RV £5,001 - £50,000	N/A	1.6902	N/A	N/A
RV >£50,000	N/A	1.6902	N/A	N/A

UNMEASURED WASTEWATER (£ P.A.)

OTHER CHARGES	FOUL ONLY	FOUL AND HIGHWAY DRAINAGE	SURFACE WATER DRAINAGE AND HIGHWAY DRAINAGE	FULL (FOUL, SURFACE WATER DRAINAGE, AND HIGHWAY DRAINAGE)
Single lock-up garage	N/A	45.35	N/A	N/A
General access to supplies: per employee charge	N/A	N/A	N/A	N/A
Car park	N/A	N/A	N/A	N/A
Place of worship	N/A	N/A	N/A	N/A
SWD - Band A – <500m2	N/A	N/A	43.24	N/A
SWD - Band B – 500-749m2	N/A	N/A	101.18	N/A
SWD - Band C – 750-999m2	N/A	N/A	151.77	N/A
SWD - Band D – 1,000-1,999m2	N/A	N/A	202.36	N/A
SWD - Band E – 2,000-14,999m2	N/A	N/A	404.72	N/A
SWD - Band F – 15,000-34,999m2	N/A	N/A	3,035.37	N/A
SWD - Band G – 35,000-149,999m2	N/A	N/A	7,082.53	N/A
SWD - Band H – >150,000m2	N/A	N/A	30,353.72	N/A

Trade effluent

Standard components	<0.5 MI	0.5-5MI	5-25MI	25-50MI	50-100MI	100-250MI	>250MI	Other large user charge
R = reception and conveyance charge [p/m ³]	0.4655	0.4655	0.4655	0.4655	0.2627	0.2627	0.1755	N/A
V = primary treatment (volumetric) charge [p/m ³]	0.4603	0.4603	0.4603	0.4603	0.4603	0.4603	0.4603	N/A
Bv = additional volume charge if there is biological treatment [p/m ³]	0.4174	0.4174	0.4174	0.4174	0.4174	0.4174	0.4174	N/A
M = treatment and disposal charge where effluent goes to sea outfall [p/m ³]	N/A	N/A	N/A	N/A	N/A	N/A	N/A	N/A
B = biological oxidation of settled sewage charge [p/kg]	0.4969	0.4969	0.4969	0.4969	0.4969	0.4969	0.4969	N/A
S = treatment and disposal of primary sewage sludge charge [p/kg]	0.8231	0.8231	0.8231	0.8231	0.8231	0.8231	0.8231	N/A
(V + Bv) = primary treatment with biological treatment [p/m ³] (if V and Bv are zero above)	N/A	N/A	N/A	N/A	N/A	N/A	N/A	N/A
Os = Chemical oxygen demand (COD) of crude sewage one hour quiescent settlement	840	840	840	840	840	840	840	N/A
Ss = total suspended solids of crude sewage [mg/litre]	335	335	335	335	335	335	335	N/A
Ot = Chemical oxygen demand (COD) of effluent after one hour quiescent settlement at ph 7	Customer specific							
St = total suspended solids of effluent at ph 7 [mg/litre]	Customer specific							

Fixed charges (£ p.a.)	<0.5 MI	0.5-5MI	5-25MI	25-50MI	50-100MI	100-250MI	>250MI	Other large user charge
Minimum charge	442.56	442.56	442.56	442.56	442.56	442.56	442.56	N/A

yorkshirewater.com

Yorkshire Water Services Limited, Western House, Halifax Road,
Bradford, BD6 2SZ. Registered in England and Wales No.2366682

