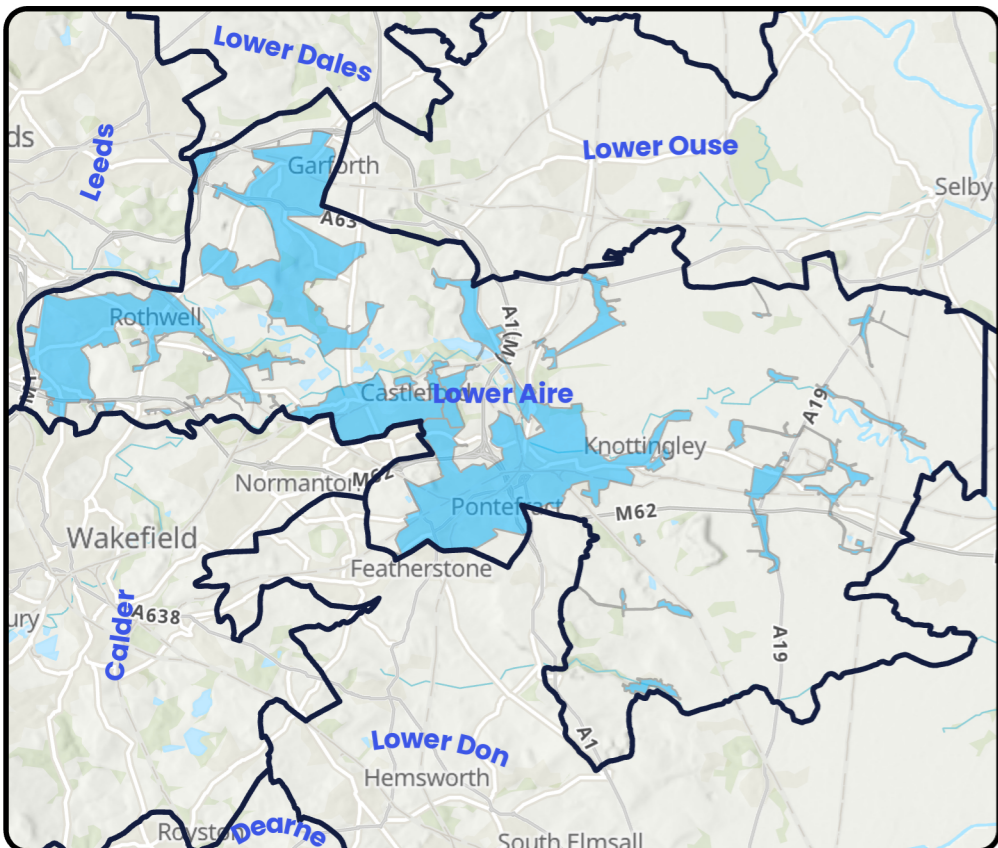
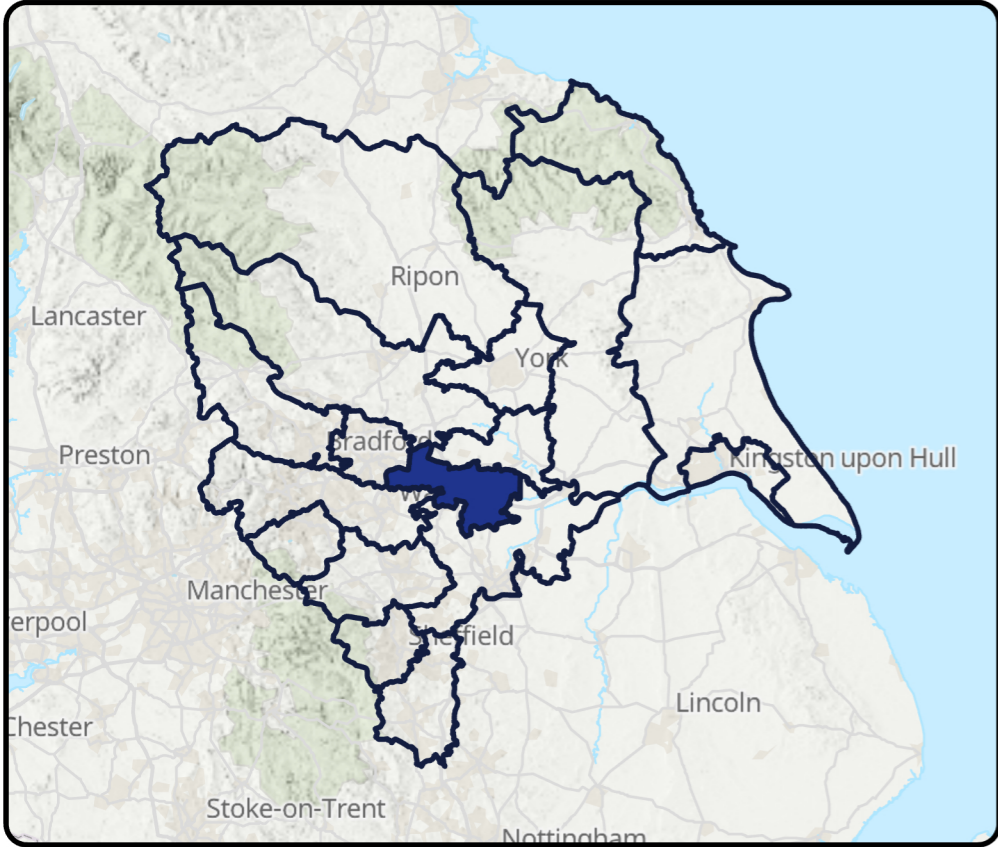


# Lower Aire Strategic Planning Area

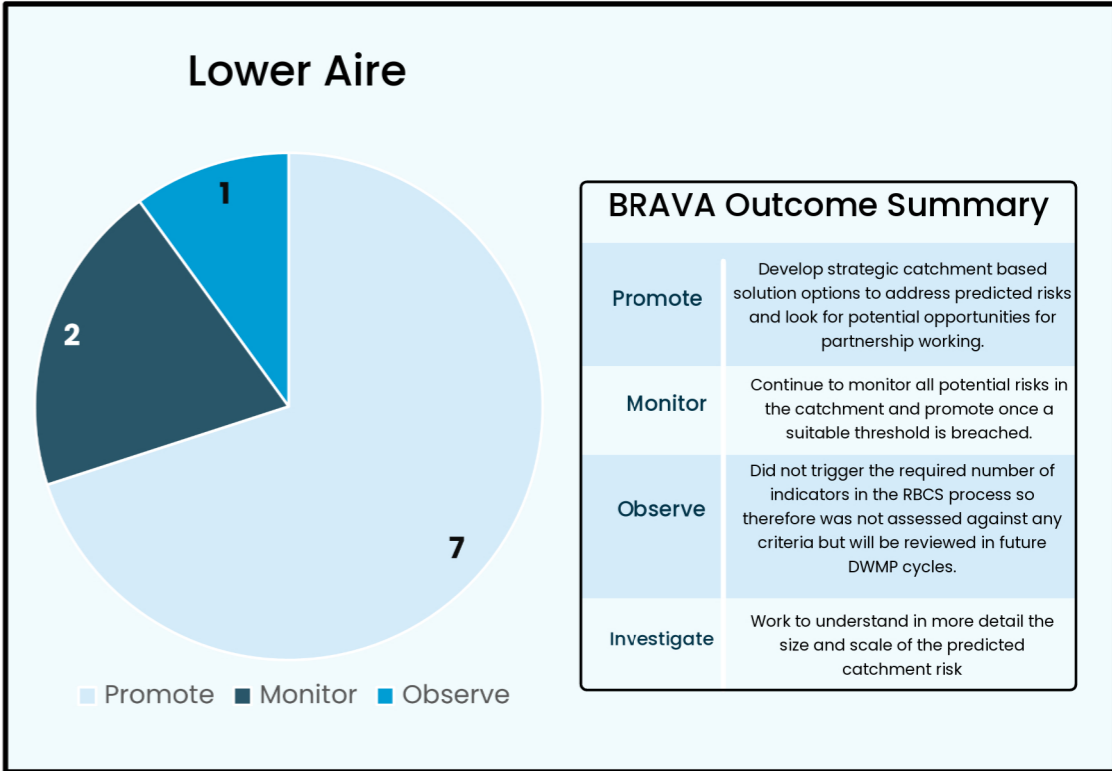


YorkshireWater



### Key Strategic Planning Area Statistics

Number of WwTW Catchments	12
Population Equivalent in 2020	155,456
Population Equivalent in 2050	185,002
Population Equivalent Growth	19%
Proportion of Storm Overflows in L2	2%
Wastewater Pumping Stations	88
Foul and Combined Sewer Length	564km
Surface Water Sewer Length	316km
Catchments Passed Through To BRAVA	11



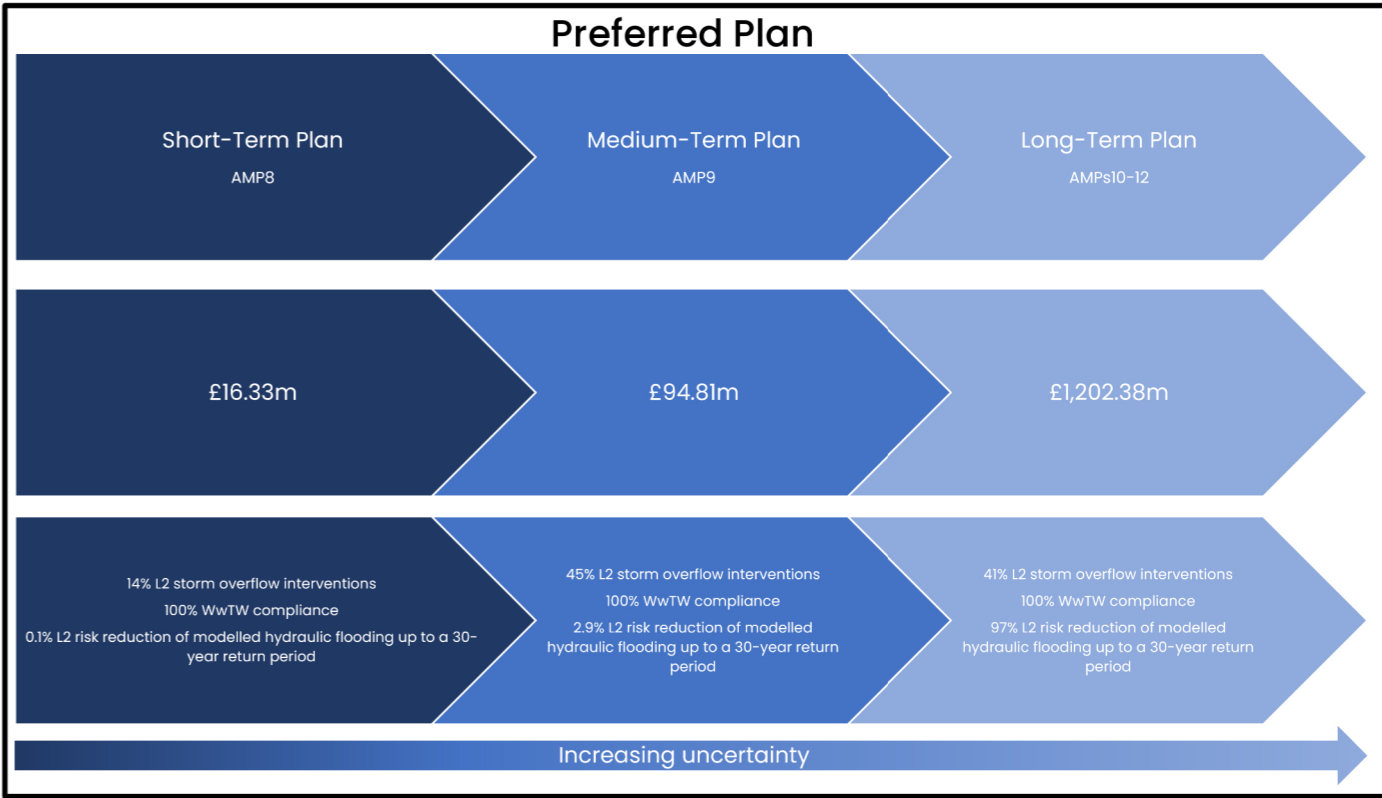
### National Baseline Risk and Vulnerability Assessment

Internal Sewer Flooding 2020 Score	Pollution Risk 2020 Score	Sewer Collapse Risk 2020 Score	Risk of Sewer Flooding (1 in 50) 2020 Score	Risk of Sewer Flooding (1 in 50) 2050 Score	Storm Overflow Performance 2020 Score	Storm Overflow Performance 2050 Score	Risk of WwTW Compliance Failure 2020	Risk of WwTW Compliance Failure 2050
2	2	0	1	1	2	2	1	1

0 Not Significant      1 Moderately Significant Risk      2 Very Significant

### Scenario 2

<b>Deliver the requirements of the Storm Overflow Discharge Reduction Plan</b>	<ul style="list-style-type: none"> <li>Annual average of no more than 10 spills per storm overflow</li> <li>Annual bathing season average of no more than 2 spills per storm overflow discharging to coastal bathing waters, to support achieving excellent bathing water classification</li> <li>Annual bathing season average of no more than 1 spill per storm overflow discharging to inland bathing waters</li> <li>Installation of continuous water quality monitoring to assess any impact from storm overflows and wastewater treatment works discharge outlets</li> <li>Provision of screening at all storm overflows</li> <li>Ensure no local ecological harm from storm overflows</li> </ul>
<b>Reduce Modelled Hydraulic Flood Risk</b>	Reduce model predicted risk of internal and external hydraulic sewer flooding of properties up to a 1 in 30 return period, compared to the 2050 position
<b>Maintain WwTW Compliance</b>	Ensure all of our wastewater treatment works remain compliant with current environmental permits and any future changes to permits



Copyright Yorkshire Water Services Ltd 2023  
 Contains OS data © Crown Copyright and database right 2022  
 Contains data from OS Zoomstack, Contains OS data © Crown Copyright and database right 2019

The risk position and subsequent outcome is a result based on the DWMP framework. The baseline and future performance of our catchments will be incorporated into our standard business planning processes and may result in some catchments changing classification and will be prioritised accordingly.